



CO₂ Incubator ICO with TwinDISPLAY
AtmoCONTROL software

Model sizes: 50 / 105 / 150 / 240

+18 °C to +50 °C

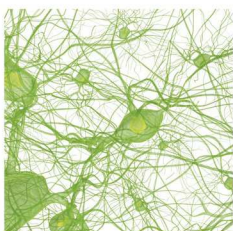
Humidity 40 to 97 % rh

CO₂ concentration 0 to 20 %

O₂ concentration 1 to 20 %

CO₂ INCUBATOR ICO Safety at all times. When it comes to safety and user friendliness, the highly modern CO₂ incubator ICO is the perfect solution: Thanks to the battery-buffered ControlCOCKPIT, the operating display, logging and CO₂ control remain fully functional even when there is a power failure. All parameters are logged in accordance with the FDA and, when individually adjusted ranges for CO₂, O₂, temperature and humidity are exceeded, notifications can be sent to a mobile phone in addition to an alarm.

The control technology is so finely tuned that the setpoint temperature is guaranteed to be reached without temperature overshoots. With its rounded corners, the interior is easy to clean and can be sterilised for 60 minutes at 180 °C (including all sensors).



Unrivalled user friendliness

All parameters can be set easily and intuitively both with the ControlCOCKPIT or the AtmoCONTROL software. The shutter box can be opened, allowing fast access to controls. Maintenance is possible even if the appliances are stacked. The appliance has USB and Ethernet connections as well as a data logger with a ten-year storage capacity. Data can be read and programmes can be transferred by remote access.



Minimising vaporisation and condensation

The active humidity control minimises vaporisation in the interior and ensures short recovery times after the door has been opened. Together with the heating of the interior from all six sides including the heated inner glass door, it prevents the dangerous formation of condensation and offers maximum protection for cell and tissue cultures. The turbulence-free chamber ventilation ensures a constant and uniform atmosphere.



CO₂ INCUBATORS ICO

according to DIN 12880:2007-05, EN 61010-1 (IEC 61010-1), EN 61010-2-010

Standard units are safety-approved and bear the test marks:



Interior: Stainless steel, material 1.4301 (ASTM 304), deep-drawn, seamlessly welded

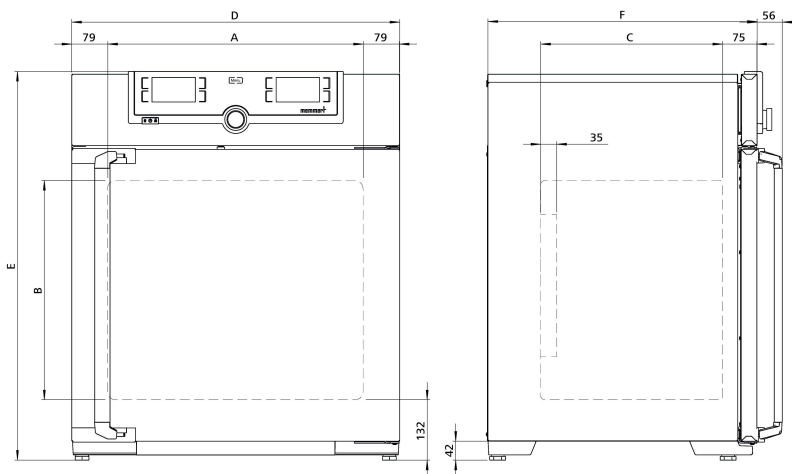
Housing: Textured stainless steel, rear zinc-plated steel, intuitively operated TwinDISPLAY (TFT colour display) with touchscreen; fully insulated stainless steel door and heated inner glass door

Automatic sterilisation: Humidity and CO₂ sensor sterilised inside the CO₂ incubator

Connection: Mains cable with plug (German type)

Installation: 4 adjustable feet

Interfaces:



Model sizes/Description			50	105	150	240
Stainless steel interior	Volume	approx. l	56	107	156	241
	Width	(A) mm	400	560		600
	Height	(B) mm	425	480	700	810
	Depth (less 35 mm for fan)	(C) mm	330	400		500
	Max. number of perforated shelves	number	5	6	10	12
	Max. loading per perforated shelf	kg	15			
	Max. loading of chamber	kg	75	90	120	140
Textured stainless steel exterior	Width	(D) mm	559	719		759
	Height (variable through adjustable feet)	(E) mm	795	850	1070	1180
	Depth (without door handle, depth of handle +56 mm)	(F) mm	521	591		691
	Fully insulated heated stainless steel door		●			
	Additional heated inner glass door		●			
Standard equipment	Stainless steel shelves, perforated	number	1	2		
	Stainless steel water dish (not applicable with option K7)	number	1			
	Works calibration certificate (measuring point chamber centre) at +37 °C, 5 % CO ₂ for standard units		●			
	Works calibration certificate at +37 °C, 5 % CO ₂ , 90 % rh and 10 % O ₂ (requires option K7 and option T6); standard equipment for units with O ₂ control		●			
	Works calibration certificate at +37 °C, 5 % CO ₂ and 90 % rh (requires option K7); standard equipment for units with active humidity control		●			
	CO ₂ connection set: hose with coupling and clamp		●			
	Standard sterilisation programme (without removing the sensors), humidity and CO ₂ sensor sterilised inside the CO ₂ incubator		60 minutes at 180 °C			
	Membrane filter (in order to remove impurities and pollutants, all incoming gases pass through a membrane filter before they reach the chamber)		●			
Temperature	Working temperature range	°C	at least 5 above ambient temperature up to +50			
	Setting temperature range	°C	+18 to +50			
	Setting accuracy	°C	0.1			
	Temperature fluctuations with time at +37 °C	K	+/- 0.1			
	Temperature variation in chamber at +37 °C	K	+/- 0.3			
Humidity	Humidity limitation thanks to a Peltier element; when water dish is full and inserted, the Peltier element limits the value of relative humidity in the interior to 93 % rh +/- 2.5 %		●			
	Setting range active humidity control (with option K7)	% rh	40 to 97 and rh-Off			
	Setting accuracy	% rh	0.5			
CO ₂ / O ₂	Digital electronic CO ₂ control with dual beam NDIR system, with auto-diagnostic system and acoustic fault indication, barometric pressure compensation		●			
	Setting range CO ₂	% CO ₂	0 to 20			
	Variation in time CO ₂	% CO ₂	+/- 0.2			
	Setting accuracy CO ₂	% CO ₂	0.1			
	Setting range O ₂	% O ₂	1 to 20			
	Setting accuracy O ₂	% O ₂	0.1			
Further data	Electrical load at 230/115 V, 50/60 Hz	approx. W	1100	1300	1500	1650

Model sizes/Description			50	105	150	240
Packing data	Net weight	approx. kg	55	75	90	110
	Gross weight (packed in carton)	approx. kg	74	100	116	145
	Width	approx. mm	730	800		840
	Height	approx. mm	950	1030	1250	1360
	Depth	approx. mm	640	800		900
Order No. CO ₂ Incubators			ICO50	ICO105	ICO150	ICO240

Options		50	105	150	240
Voltage 115 V, 50/60 Hz			X2		
Battery-buffered ControlCOCKPIT: Uninterrupted supply for the entire display unit (ControlCOCKPIT) and therefore complete documentation of all parameters even when there is a power failure. The CO ₂ parameter is continuously regulated			C2		
Two gas connections with quick release connectors for automatic switch-over of gas cylinders; incl. two CO ₂ connection sets: hose with coupling and clamp			T1		
Electropolished interior			T2		
Active microprocessor control for humidifying and dehumidifying (40 - 97 % rh), incl. digital indication and auto-diagnostic system ensures even more rapid reaching of set humidity and very short recovery times while avoiding condensate formation. Humidity supply with water (only for demineralised water with a conductivity of 5 to 10 µS/cm and a pH value between 5 and 7; from an external tank) by a self-priming pump; integral bacteria block by generating hot steam, dehumidifying via sterile filter (combination of options K7 and F7 for ICO50 not possible)			K7		
Control of oxygen concentration by N ₂ inlet; adjustment range 1 % up to 20 % O ₂ ; setting accuracy 0.1 % (requires option K7). Incl. N ₂ connection set: hose with coupling and clamp			T6		
Peltier cooling unit enables a working temperature of +37 °C even at higher ambient temperatures of up to +35 °C			K5		
Capacitive humidity sensor for measuring and displaying the relative humidity			K6		
Entry port (silicone), 40 mm clear diameter, moisture tight, can be closed by silicone stopper, at the back, centre right; not available for ICO50 with active humidity control (option K7) or humidity display (option K6)			F7		
Heated inner door with partitioned glass doors; size 105/150/240 has 2/3/4 partitioned glass doors		-	K4		
4 - 20 mA current loop interface	Temperature controller, actual value (0 to +70 °C = 4 - 20 mA)		V3		
	Humidity controller, actual value (0 to 100 % rh = 4 - 20 mA) (requires option K7 or K6)		V7		
	CO ₂ controller, actual value (0 to 25 % CO ₂ = 4 - 20 mA)		V9		
	O ₂ controller, actual value (0 to 25 % O ₂ = 4 - 20 mA) (requires option T6)		V1		
Works calibration certificate for 5 %, 7 % and 10 % CO ₂ (measured at +37 °C) special works calibration certificates upon request			D00106		
Works calibration certificate for one (freely selectable) temperature, humidity and CO ₂ value according to customer specification (requires option K7)			D00131		
Works calibration certificate for one (freely selectable) temperature, humidity, CO ₂ and O ₂ value according to customer specification (requires option T6)			D00143		
Door hinged on the left			B8		
Potential-free contact for combination error message (e.g. supply failure, sensor fault, fuse)			H6		
MobileALERT, notification by SMS in case of any error or alarm of the device (requires option H6)			C3		
MobileALERT for up to 4 alarm notifications; notification by SMS. temperature and CO ₂ alarm (standard), additionally humidity alarm (when equipped with option K7) and O ₂ alarm (when equipped with option T6)			C4		
Door with lock and key (safety lock)			B6		

Accessories	50	105	150	240
Perforated stainless steel shelf	E35160	E37418	E35158	
Water dish		B38737		
Subframe (622 mm high) adjustable in height (sizes 150/240: should not be used for 2 stacked units)	B33504	B33505	B33506	
Subframe (130 mm high); sizes 150/240: only in combination with the corresponding stacking sets for stacked appliances	B33507	B33508	B33509	
Subframe, on castors (height 120 mm; stainless steel, material 1.4301)		-	B43598	
HEPA14-filter for chamber according to EN 1822, packed in sterile condition, incl. fixing unit		B49800		
3 HEPA14-filters (B49800) for chamber according to EN 1822, packed in sterile condition, incl. fixing unit		B39698		
CO ₂ pressure reducing valve to DIN 8546, incl. gas cylinder monitor		E02087		
N ₂ pressure reducing valve to DIN EN ISO 2503, incl. gas cylinder monitor (requires option T6)		E06162		
Central water supply, with filter cartridges for connection to the domestic water supply (requires option K7). Product information on demand		ZWVR6		
Central water supply, without filter cartridges for connection to the domestic water supply (only for demineralised water with a conductivity of 5 to 10 µS/cm and a pH value between 5 and 7, requires option K7). Product information on demand		ZWVR7		
Guarantee extension by 1 year		GA3Q5		
Celltron benchtop shaker (not subject to discount) - accessories upon request (only in combination with E06726)		-		E06724
Base plate with sticky stuff (not subject to discount) (only in combination with E06724)		-		E06726
USB-Ethernet adapter		E06192		

Accessories	50	105	150	240
Ethernet connection cable 5 m for computer interface			E06189	
USB User-ID stick (with User-ID licence): Oven-linked authorisation licence (User-ID-programme) on Memory-stick, prevents undesired manipulation by unauthorised third parties. When reordering please specify serial number			B33170	
Stacking set (4 pcs) for stacking of appliances of same size	B29744		-	
Stacking set (consisting of stacking corners, one connecting plate for the rear, two wall brackets) for stacking of two units of same size	-	B42114	-	
Stacking set (consisting of stacking corners, one connecting plate for the rear, two wall brackets) for stacking of two units of same size (only in connection with subframe B33509 or B43598)	-			B48129
FDA conforming software AtmoCONTROL (FDA edition). Meets the requirements for the use of electronically stored data sets and electronic signatures as laid down in Regulation 21 CFR Part 11 of the US Food and Drug Administration (FDA). Base licence for the control of one unit. Respective IQ/OQ documents available in German and English language (without surcharge)			FDAQ1	
Integration of additional units (up to max. 31 units) into an already existent FDA-software licence			FDAQ2	
External measuring instrument with additional measuring head for temperature and humidity measurement. Product information on demand			B04714	
DAkkS calibration for one (freely selectable) temperature and humidity value according to method C (DKD-R 5-7) (requires option K7)			E48847	
DAkkS calibration for further temperature and humidity values according to method C (DKD-R 5-7) (requires option K7)			E48848	
IQ document with device-specific works test data, OQ/PQ check list as support for validation by customer			D00124	
IQ/OQ document with device-specific works test data for one free-selectable CO ₂ and temperature value, incl. temperature distribution survey at Memmert for 27 measuring points to DIN 12880:2007-05, PQ check list as support for validation by customer. 475 € for further CO ₂ and temperature values			D38898	
IQ/OQ document with device-specific works test data for one free-selectable CO ₂ , humidity and temperature value, incl. temperature distribution survey at Memmert for 27 measuring points to DIN 12880:2007-05, PQ check list as support for validation by customer (requires option K7). 605 € for further CO ₂ , humidity and temperature values			D38897	
On-site IQ/OQ for a freely selectable temperature and CO ₂ value, including temperature distribution survey for 27 measuring points to DIN 12880: 2007-05 (excluding travel costs, not subject to discount, GER, AT, FR only)			DLQ102	
Extension of DLQ102 by an additional freely selectable temperature and CO ₂ value (not subject to discount)			DLQ102A	
On-site IQ/OQ for a freely selectable temperature, humidity and CO ₂ value, including temperature distribution survey for 27 measuring points to DIN 12880: 2007-05 (requires option K7) (excluding travel costs, not subject to discount, GER, AT, FR only)			DLQ103	
Extension of DLQ103 by an additional freely selectable temperature, humidity and CO ₂ value (requires option K7) (not subject to discount)			DLQ103A	
On-site IQ/OQ for a freely selectable temperature, CO ₂ and O ₂ value, including temperature distribution survey for 27 measuring points to DIN 12880:2007-05 (requires option T6) (excluding travel costs, not subject to discount, GER, AT, FR only)			DLQ104	
Extension of DLQ104 by an additional freely selectable temperature, CO ₂ and O ₂ value (requires option T6) (not subject to discount)			DLQ104A	
On-site IQ/OQ for a freely selectable temperature, humidity, CO ₂ and O ₂ value, including temperature distribution survey for 27 measuring points to DIN 12880: 2007-05 (requires option K7 and T6) (excluding travel costs, not subject to discount, GER, AT, FR only)			DLQ105	
Extension of DLQ105 by an additional freely selectable temperature, humidity, CO ₂ and O ₂ value (requires option K7 and T6) (not subject to discount)			DLQ105A	
Individual on-site Performance Qualification (PQ)			DLQ200	
Maintenance ICO/ ICOmed active humidity - carrying out and documentation according to Memmert maintenance plan (requires option K7) (excluding travel costs, not subject to discount, GER, AT, FR only)			S00312	
Maintenance contract ICO/ ICOmed active humidity - carrying out and documentation according to Memmert maintenance plan, minimum duration 3 years (requires option K7) (excluding travel costs, not subject to discount, GER, AT, FR only)			S00312J	
Maintenance ICO/ ICOmed passive humidity - carrying out and documentation according to Memmert maintenance plan (excluding travel costs, not subject to discount, GER, AT, FR only)			S00323	
Maintenance contract ICO/ ICOmed passive humidity - carrying out and documentation according to Memmert maintenance plan, minimum duration 3 years (excluding travel costs, not subject to discount, GER, AT, FR only)			S00323J	
Calibration of one freely selectable temperature value (excluding travel costs, not subject to discount, GER, AT, FR only)			S00205	
Calibration of an additional temperature value (not subject to discount)			S00215	
Calibration of one freely selectable temperature and humidity value (requires Option K7) (excluding travel costs, not subject to discount, GER, AT, FR only)			S00207	
Calibration of an additional temperature and humidity value (requires option K7) (not subject to discount)			S00216	
Calibration of one freely selectable temperature and humidity value including CO ₂ (requires option K7) (excluding travel costs, not subject to discount, GER, AT, FR only)			S00211	
Calibration of an additional temperature and humidity value including CO ₂ (requires option K7) (not subject to discount)			S00217	

MODEL VARIANTS

SingleDISPLAY ControlCOCKPIT with one TFT display	TwinDISPLAY ControlCOCKPIT with two TFT displays
AVAILABLE APPLIANCES UN / UF / IN / IF / IPPeco / IPP / UNm / UFm / INm / IFm / SN / SF / IFbw	AVAILABLE APPLIANCES HPPeco / ICHeco / ICH / HCP / UNplus / UFplus / UF TS / UNpa / VO / INplus / IFplus / ICO / IPPecoplus / IPPplus / ICPeco / ICP / UNmplus / UFmplus / INmplus / IFmplus / SNplus / SFplus / ICOfmed
One high-resolution TFT colour display with touch-sensitive buttons for selection of functions	Two high-resolution TFT colour displays with touch-sensitive buttons for selection of functions
Available parameters on the ControlCOCKPIT: Temperature (Celsius or Fahrenheit), fan speed, exhaust air flap position, programme time	Available parameters on the Control COCKPIT: All parameters of the SingleDISPLAY and device-specific parameters like relative humidity, illumination and CO ₂
One temperature sensor Pt100 DIN class A in a 4-wire circuit	Two Pt100 sensors DIN class A in a 4-wire circuit for mutual monitoring, taking over functions in case of an error
	HeatBALANCE function for application specific adjustment of heat output distribution (balance) between the upper and lower heating groups in an adjustment range between -50 % and +50 % (not valid for models 30, HPP110eco, IPP110ecoplus, ICPeco, ICP, ICHeco, ICH)
AtmoCONTROL software ¹⁾ for reading out, managing and organising the data logger via Ethernet interface (temporary trial version can be downloaded). USB stick with AtmoCONTROL software available as accessory (on demand)	AtmoCONTROL software ¹⁾ on a USB stick for programming, managing and transferring programmes via Ethernet interface or USB port
	ControlCOCKPIT with USB port for uploading programmes, reading out protocol logs, activating the User-ID function
	Displaying of already logged protocol data on the ControlCOCKPIT (max 10,000 values correspond to approx. 1 week)
Ethernet interface on the rear of the appliance for reading out the protocol log and for online logging	Ethernet interface on the rear of the appliance for reading out the protocol log and for uploading programmes and for online logging
Double overtemperature protection: Electronic temperature monitoring with freely adjustable monitoring temperature, for models U, I, S with option A6 TWW/TWB (protection class 3.1 or 2), mechanical temperature limiter TB acc. to DIN 12880	Multiple overtemperature protection: Electronic temperature monitoring TWW/TWB (protection class 3.1 or 2 resp. 3.3 for units with active cooling) and mechanical temperature limiter TB (protection class 1) acc. to DIN 12880, AutoSAFETY automatically adjusts to the set value within a freely adjustable tolerance range. Setting individual MIN / MAX values for over/undertemperature and also for all other parameters such as relative humidity, CO ₂
PID microprocessor control with integrated auto-diagnostic system	
Structured stainless steel housing, scratch-resistant, robust and durable; rear of zinc-plated steel	
High-temperature connectors on the rear of the appliance for single-phase power connection according to country specific systems and IEC standards	
Internal data logger with a storage capacity of at least 10 years	
German, English, French, Spanish, Polish, Czech, Hungarian language settings available on the ControlCOCKPIT	
Digital backwards counter with target time setting, adjustable from 1 minute to 99 days	
The SetpointWAIT function guarantees that the process time does not start until the set temperature is reached at all measuring points – optional for temperature values recorded by the freely positionable Pt100 sensors inside the chamber	
Adjustment of three calibration values for temperature and additional appliance specific parameters directly at the ControlCOCKPIT	

¹⁾ As a manufacturer, Memmert GmbH + Co. KG clearly labels its devices, which are medical devices in the sense of the European legislation. The AtmoCONTROL software is not a medical device. All Memmert medical devices can be used for their purpose without the software AtmoCONTROL. AtmoCONTROL is only intended for reading the data logging in conjunction with Memmert GmbH + Co. KG medical devices.

SOFTWARE AtmoCONTROL

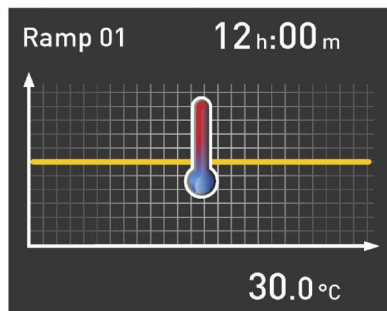
AtmoCONTROL

The innovative control and logging software

Parameters such as temperature and humidity as well as the process time can be set directly at the ControlCOCKPIT. Ramp programming is done via the control and logging software AtmoCONTROL.

Drag, drop & go!

Numerical and graphic programming of complex processes is a thing of the past. Today, programming is done via AtmoCONTROL by means of the mouse or touchpad on your notebook. Even the most complex ramp programmes are created within minutes. Simply drag & drop the graphical symbols for the desired parameters to the input field and change the values according to your wishes with a mouse click.

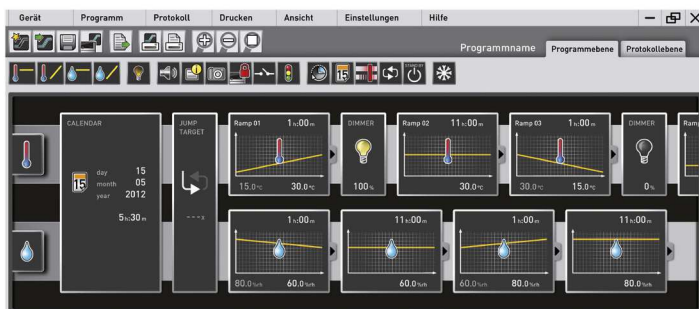


Programme functions for appliances with SingleDISPLAY and TwinDISPLAY

- Reading out, managing and organising the data logger
- Saving the log memory in various formats
- Online monitoring of up to 32 connected appliances
- Optical alarms when the alarm limits individually set at the ControlCOCKPIT are exceeded
- Automatic alarm to one or several e-mail addresses

Additional functions for appliances with TwinDISPLAY

- Intuitive programming and archiving of ramps and programme sequences
- Synchronous visualisation of the created programme sequence during programming
- Application-specific repeat functions (loops) can be inserted within a temperature control programme in any place
- Simple creation of repeating weekly programmes
- Programming, managing and transferring programmes via Ethernet interface or USB port



Device Modifications - Proven and Good

The perfect extension for your Memmert appliance

Our mission at Memmert is to provide you with the best possible solution for your individual application. With the increasing complexity of customer processes, a custom-fit modification of our appliances has many advantages for your application. Through modifications, process and set-up times can be significantly reduced or errors in the application can be completely ruled out by monitoring devices. Even small measures, such as individually adapted accessories, have a noticeable influence on the ergonomics and user-friendliness in the operation of the appliance.

You as a customer have the best ideas - and often already have a specific idea of how our products can be better used in your working environment.

Tell us about your thoughts and let us create an individual solution together with you! Please contact us and call us at +49 9122-925-0 or send us an email to sonderbau@memmert.com.

The Memmert customisation department team is looking forward to hearing from you!

Versatile modifications for our standard appliances



Mechanics

- Customised interior fittings
- Individual entry ports in all sizes and shapes
- Telescopic slide pull-outs for ergonomic loading



Electronics

- Extended parameter monitoring e.g. by means of additional measuring sensors
- Optical and acoustic process monitoring e.g. by means of a traffic light system



Software

- Additional interfaces for data evaluation
- Individual temperature, humidity and CO₂ parameters



Accessories

- Tailor-made subframe and stacking options
- Modified grids and shelves
- Individual air filters

CUSTOMER SPECIFIC SOLUTIONS

Customised solutions for your requirements

Our expertise as a development partner in plant and project business

The Memmert customisation department has been active in the project business for over 20 years now and has proven itself in countless projects as a strong and reliable partner. The experts in customisation benefit from two aspects: Access to the complete capacities of an ultra-modern and specialised production line, as well as the entire technical know-how of the Memmert company in designing climate and temperature control appliances. Combined with the experience of our project managers, the Memmert customisation department is also able to find a solution for the most complex requirements.

Special sizes

Does your product not fit into a standard unit? We build appliances to measure! Whether you need more volume in the interior or there is not enough space for installation at the installation location, we have the expertise to design your appliance individually. Ask us!

Process and plant integration

Integrate our technology seamlessly into your plant or your work organisation. We will find the right solution together for your process integration:

- Preparation for integration into your plant
- Integration of your processes into our appliances
- Inclusion of customer-specific installations
- Interface for semi-automatic assembly

Project business

Are you a project developer with ideas for innovative products and looking for a strategic cooperation? Take advantage of our know-how and manufacturing capacities for your project. Our customisation department will be pleased to hear from you!

