












Thermo Scientific MaxQ Shakers







Reliability. Simplicity.
Flexibility.

Thermo
SCIENTIFIC

Thermo Scientific MaxQ Shaker Product

Model	Benchtop (B), Floor (F) or Stackable (S)	Motion	Platform Size Inches (cm)	250 ml Flask Capacity Dedicated* Platform	250 ml Flask Capacity Universal* Platform
MaxQ 2000 Increased capacity, small footprint 	B	Orbital	13 x 11 (33 x 28)	12	9
			18 x 18 (45.7 x 45.7)	25	16
			24 x 18 (60.9 x 45.7) ¹	N/A	24
MaxQ 3000 Increased capacity, small footprint 	F	Orbital	30 x 18 (76 x 45.7)	40	24
			36 x 24 (91 x 60.9)	70	40
MaxQ 2506/2508 Flexibility and choice 	B	2508: orbital/ reciprocating	13 x 11 (33 x 28)	10	9
		2506: reciprocating	18 x 18 (45.7 x 45.7)	25	16
			24 x 18 (60.9 x 45.7)	24	24
MaxQ 4450 Flexible, affordable 	B	Orbital	13 x 11 (33 x 28)	10	9
MaxQ 4000 Spacious chamber, small footprint 	B	Orbital	18 x 18 (45.7 x 45.7)	25	16
MaxQ 5000 Large capacity applications 	F	Orbital	30 x 18 (76 x 45.7)	40	24
MaxQ 6000 Stackable, space-savings 	S	Orbital	18 x 18 (45.7 x 45.7)	25	16
MaxQ 8000 Maximum flexibility, stackable design 	S	Orbital	29.5 x 18 (74.9 x 45.7)	30	30
MaxQ 7000 Excellent temp. uniformity 	B	Orbital	13 x 11 (33 x 28)	9	9

*See following pages 6–7 for a complete description of platform types. ¹Universal platform only; ²Fixed reciprocating stroke length and orbital motion; ³Adjustable reciprocating stroke length

Model	Benchtop (B), Floor (F)	Motion	Platform Size Inches (cm)	250 ml Flask Capacity Dedicated* Platform	250 ml Flask Capacity Universal* Platform
MaxQ 416 HP Maximum capacity with platform options 	B	Orbital	18 x 18 (45.7 x 45.7)	25	18
			24 x 18 (60.9 x 45.7)	35	25
MaxQ 430 HP Maximum capacity with platform options 	F	Orbital	29.5 x 18 (74.9 x 45.7)	40	30
			36 x 24 (91.4 x 60.9)	70	55
MaxQ 420 HP Large benchtop, optimum growth 	B	Orbital	18 x 18 (45.7 x 45.7)	25	18
MaxQ 435 (436) HP High capacity 	F	Orbital	29.5 x 18 (74.9 x 45.7)	40	30
MaxQ 480R (481R) HP High capacity					

*See following pages 6–7 for a complete description of platform types.

Selector Guide

Maximum Capacity Largest Flask on a Platform	Orbit Diameter Reciprocating Motion Inches (cm)	RPM Range	Temperature Range °C (T _A =Ambient Temperature)	Maximum Load Lb. (kg)	Refrigeration	Gassing Manifold	Page
1 x 6L	0.75 (1.9)	Analog: 40–400	N/A	35 (15.9)			9–11
2 x 6L		Digital: 15–500					
3 x 6L							
3 x 6L	1.0 (2.54)	Analog: 40–400	N/A	50 (22.7)			9–11
6 x 6L		Digital: 15–500					
1 x 6L	2508: 0.4 (1.2) ² 2506: 0.5 to 1.5 (1.2 to 3.8) ³	2508 Analog: 40–400	N/A	15 (6.8)			12–13
2 x 6L		2506 Analog: 10–250					
3 x 6L							
4 x 1L	0.75 (1.9)	Analog: 40–400 Digital: 15–500	T _A +5°C to 80°C	35 (15.9)			14–15
6 x 2L	0.75 (1.9)	Analog: 40–400 Digital: 15–500	T _A +10°C to 60°C T _A +10°C to 80°C T _A -15°C to 60°C	50 (22.7)	●	●	16–17
4 x 6L	1.0 (2.54)	Analog: 40–400 Digital: 15–500	T _A +10°C to 60°C T _A -15°C to 60°C	75 (34)	●	●	18–19
2 x 6L	0.75 (1.9)	Digital: 15–500	T _A +10°C to 80°C T _A -15°C to 80°C	35 (15.9)	●		20–21
12 x 2L	1.0 (2.54)	Digital: 25–400	T _A +10°C to 60°C T _A -15°C to 60°C	35.5 (16.1)	●		22–25
1 x 6L	0.5 (1.27)	Analog: 40–400 Digital: 15–500	T _A +5°C to 65°C T _A -5°C to 65°C	35 (15.9)			26–27

Maximum Capacity Largest Flask on a Platform	Orbit Diameter Inches (cm)	RPM Range	Temperature Range °C (T _A =Ambient Temperature)	Maximum Load Lb. (kg)	Refrigeration	Incubation	Page
2 x 6L	1.0 (2.54)	25–525	N/A	71 (32)			30–31
4 x 6L							
4 x 6L	1.0 (2.54)	25–525	N/A	71 (32)			30–31
8 x 6L							
6 x 2L	1.0 (2.54)	25–525	5°C above ambient to 80°C	71 (32)		●	32–33
4 x 6L	1.0 (2.54)	25–525	5°C above ambient to 60°C 4°C to 60°C	71 (32)	●	●	34–35

Trust your samples to a proven, reliable product

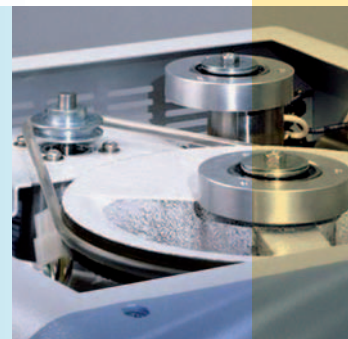
You invest a lot into the preparation of your samples from growing cultures that express proteins to staining your gels for visualization and much more. Only Thermo Scientific MaxQ shakers deliver outstanding performance, accuracy and reproducible results year after year.

Our cutting-edge orbital shaker designs provide reliable around-the-clock operation ideally suited to keep your cells alive and flourishing within your working environment. Delivering reliability, simplicity and flexibility, our orbital shakers are easy to operate, offer a wide range of options that can grow with you, and will be a partner in your lab for many years — allowing you to spend more time pursuing your objectives and less time managing your shakers.



Reliability

Our outstanding drive mechanisms provide continuous 24-hour operation and allow you to shake and stir large and uneven loads, smoothly and uniformly. These innovative designs are available on all Thermo Scientific orbital shakers and both designs come with a lifetime guarantee on drive mechanisms.



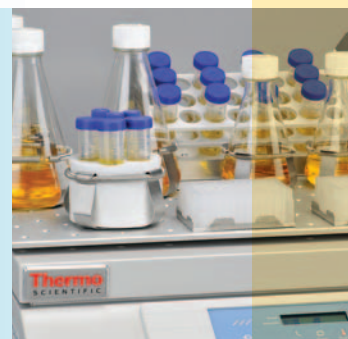
Simplicity

Easy-to-use controls let you precisely adjust individual displays for temperature, speed and time. View all parameters simultaneously to prevent risk of error while establishing running conditions.



Flexibility

Benchtop, floor and stackable models are available fully equipped with incubation, refrigeration and water bath options to accommodate any application and budget. Customizable solutions allow you to choose your platform for maximum flexibility and capacity. Platforms allow the addition and interchangeability of clamps that hold various sizes of Thermo Scientific Nalgene Erlenmeyer flasks, beakers, test tube racks and separatory funnels and Thermo Scientific Nunc microwell plates.





With a wide range of shaker options including analog or digital, incubated or refrigerated and benchtop or floor model, we make it easy to choose the right shaker solution for your laboratory.

Thermo Scientific MaxQ Analog Shakers

If your lab is analog and you intend you keep it that way, our MaxQ analog shakers are offered at an economical price and include a triple eccentric drive mechanism providing 24-hour operation and allowing shaking of large and uneven loads.

- 40 to 400 rpm speed range; monitored by analog tachometer
- Easy to read LED temperature display
- 1 to 60 minute timer or continuous operation

	Feature	MaxQ Analog Shakers
Performance	Drive Mechanism	Triple Eccentric
	Motor	Brushed
	Temperature Controller	PID Controller, $\pm 0.1^{\circ}\text{C}$ over entire temperature range
	Speed, Display and Range	Analog Tachometer, 40 to 400 rpm
	Temperature, Display and Range	Push Button LED, 10°C to 80°C
	Time Display	Analog Timer, 1–60 min timer or continuous operation
	Temperature User Calibration	Standard
	Speed User Calibration	No
	Soft Start	No
	Set Point Retention	Standard
Alarms	Speed	No
	Temperature	User adjustable over/under temperature thermostat controls the heat/refrigeration
	Temperature Set Point	Audible/Visual, over/under temperature tracking adjustable within $\pm 1^{\circ}\text{C}$
	Temperature Limits	Audible/Visual, over/under temperature tracking adjustable within $\pm 1^{\circ}\text{C}$
	Unbalanced Load	No
	Lid Open	Auto Platform Stop
Data Management	RS232 Interface	No
	Recorder Output	No
Other	Certifications	UL, cUL, CE
	Warranty	One year labor, five year parts, lifetime drive mechanism

Thermo Scientific MaxQ Digital Shakers

Our MaxQ digital shakers contain a triple eccentric drive mechanism to accommodate heavier loads, provide uniform shaking, ensure 24/7 operation and feature a maintenance-free brushless DC motor.

- 15 to 500 rpm speed range
- View temperature, speed and time simultaneously on three individual LED displays
- Continuous timed operation from 0.1 hour to 999 hours or 0.1 minute to 999 minutes
- Audible/Visual alarms protect cultures from temperature and speed deviations

Thermo Scientific MaxQ Digital HP Shakers

When you require a reliable solution for sensitive cell cultures needing protection from contamination, choose from our MaxQ High Performance line of shakers.

- 25 to 525 rpm speed range
- Backlit display contains run points and set points of temperature, speed and time that can be viewed simultaneously
- Continuous operation or timed operation from 1 minute up to 199 hours and 59 minutes
- Audible/Visual alarms protect cultures from temperature and speed deviations
- HEPA filter for maximum protection from contamination
- Directed airflow system for optimum temperature uniformity and ideal growth conditions even when the units are full

MaxQ Digital Shakers	MaxQ Digital High Performance Shakers
Triple eccentric	Triple counter-balanced
Brushless	Brushless, low-heat 24V DC with moisture resistant electronics
PID Controller, $\pm 0.1^{\circ}\text{C}$ over entire temperature range	PID Controller, $\pm 0.1^{\circ}\text{C}$ over entire temperature range
Push Button LED, 15 to 500 rpm	Push Button LED, 25 to 525 rpm
Push Button LED, 10°C to 80°C	Push Button LED, 4°C to 80°C
Push Button LED, 0.1 min – 999 hours or continuous operation	Push Button LED, 1 min – 199 hours and 59 min or continuous operation
Standard	Standard
Standard	Standard
Standard	Standard
Standard	Standard
Audible/Visual, $\pm 10\%$ of set speed	Audible/Visual, ± 5 rpm
User adjustable over/under temperature thermostat controls the heat/refrigeration	User adjustable over/under temp thermostat with independent probe controls heat/refrigeration
Audible/Visual, over/under temperature tracking adjustable within $\pm 1^{\circ}\text{C}$	Audible/Visual, over/under temperature tracking adjustable within $\pm 1^{\circ}\text{C}$
Audible/Visual, over/under temperature tracking adjustable within $\pm 1^{\circ}\text{C}$	Audible/Visual, over/under temperature tracking adjustable within $\pm 1^{\circ}\text{C}$
Auto Platform Stop	Auto Platform Stop
Auto Platform Stop	Auto Platform Stop
Standard	Standard
Standard	Standard
UL, cUL, CE	UL, cUL, CE
One year labor, five years parts, lifetime drive mechanism	One year labor, five years parts, lifetime drive mechanism



Customize your shaker solution

On the following pages, you'll find selection guides to help you build the optimal shaker for your lab and application. No matter which solution you choose, you'll find that our ordering process allows you to customize your platform for maximum flexibility and capacity.

1

Select the shaker for your application:

- A** Select a [temperature range*](#)
- B** Check the [exterior dimensions](#) to fit your space
- C** Determine the [vessel type](#) and capacity on the platform
- D** Choose [analog](#) or [digital system](#)

*temperature range not applicable on open air models

2

Choose your platform based on your needs:

Universal platforms – Choose the size platform you need appropriate to your selected shaker. With a universal platform you can maximize flexibility by selecting a mixture of different size clamps from the [Universal Clamp Guide](#).

Dedicated platforms – Select the platform with pre-installed shaker clamps appropriate to your selected shaker. If using a single-vessel size only, such as a flask, these platforms provide maximum capacity.

3

Customize your platform with universal clamps (available only with universal platforms)

Select the clamps you need from a wide selection available as seen in the [Universal Clamp Guide](#).

Thermo Scientific MaxQ 4450

A

B

Shaker Options	Speed Range (rpm)	Orbit Diameter In. (cm)	Max. Load Lb. (kg)	Temperature Range and Accuracy	Temperature Uniformity	Overall Dimensions/ Chamber Dimensions Inches (cm)			Shipping Weight Lb. (kg)	Model No. 120V, 50/60 Hz	Model No. 240V, 50/60 Hz
						L	W	H			
MaxQ 4450 – Incubated Shaker											
Analog	40–400	0.75 (1.9)	35 (15.9)	5°C above ambient to 80°C ±0.1°C at 37°C in flask	±0.5°C at 37°C in flask	27.2 (69.1)/ 17.3 (43.9)	14.1 (35.8)/ 13.3 (33.8)	15.8 (40.1)/ 9 (22.9)	77 (35)	SHKA4450	SHKA4450-1CE
Digital	15–500 ±1	0.75 (1.9)	35 (15.9)	5°C above ambient to 80°C ±0.1°C at 37°C in flask	±0.5°C at 37°C in flask	27.2 (69.1)/ 17.3 (43.9)	14.1 (35.8)/ 13.3 (33.8)	15.8 (40.1)/ 9 (22.9)	77 (35)	SHKE4450	SHKE4450-1CE
MaxQ 4450 – Incubated Shaker with Cooling Coil (Requires Chiller)											
Analog	40–400	0.75 (1.9)	35 (15.9)	5°C below ambient to 80°C ±0.1°C at 37°C in flask	±0.5°C at 37°C in flask	27.2 (69.1)/ 17.3 (43.9)	14.1 (35.8)/ 13.3 (33.8)	15.8 (40.1)/ 9 (22.9)	77 (35)	SHKA4450CC	SHKA4450CC-1CE
Digital	15–500 ±1	0.75 (1.9)	35 (15.9)	5°C below ambient to 80°C ±0.1°C at 37°C in flask	±0.5°C at 37°C in flask	27.2 (69.1)/ 17.3 (43.9)	14.1 (35.8)/ 13.3 (33.8)	15.8 (40.1)/ 9 (22.9)	77 (35)	SHKE4450CC	SHKE4450CC-1CE

Platforms

Maximize flexibility by choosing your platform and selecting a mixture of clamps.

MaxQ 2000					Model No.
Platforms Choose the platform that best fits your needs.	Universal Platforms Maximum flexibility for using a mix of different size labware on a single platform. See Universal Clamp Guide for clamp capacities. Purchase clamps separately.	11 x 13" (28 x 33 cm)	Platform without Clamps	30100 ¹	
		11 x 13" (28 x 33 cm)	Dual Stacked Platform without Clamps	30125	
		18 x 18" (45.7 x 45.7 cm)	Platform without Clamps	30110 ¹	
		18 x 18" (45.7 x 45.7 cm)	Dual Stacked Platform without Clamps	30128	
		18 x 24" (45.7 x 60.9 cm)	Platform without Clamps	30106	
	Dedicated Platforms Clamps come installed to provide maximum capacity.	11 x 13" (28 x 33 cm)	Platform with Clamps	See Dedicated Platforms on p. 11	
		18 x 18" (45.7 x 45.7 cm)	Platform with Clamps	See Dedicated Platforms on p. 11	
Clamps	Mix and match clamps for your Universal Platform.			See Universal Clamp Guide below	
Misc. Accessories	Adapter set for stacking two platforms (Models 30100 and 30110 only)			3522-3	
MaxQ 3000					Model No.
Platforms Choose the platform that best fits your needs.	Universal Platforms Maximum flexibility for using a mix of different size labware on a single platform. See Universal Clamp Guide for clamp capacities. Purchase clamps separately.	30 x 18" (76 x 45.7 cm)	Platform without Clamps	30115BI	
		30 x 18" (76 x 45.7 cm)	Dual Stacked Platform without Clamps	30124	
		36 x 24" (91 x 61 cm)	Platform without Clamps	30120BI	
		30 x 18" (76 x 45.7 cm)	Platform with Clamps	See Dedicated Platforms on p. 11	
		36 x 24" (91 x 61 cm)	Platform with Clamps	See Dedicated Platforms on p. 11	
	Dedicated Platforms Clamps come installed to provide maximum capacity.				
Clamps	Mix and match clamps for your Universal Platform.				
Misc. Accessories	Adapter set for stacking two platforms (Models 30100 and 30110 only)				



Platforms

Maximize flexibility by choosing your platform and selecting a mixture of clamps.

MaxQ 2000						Model No.
Platforms Choose the platform that best fits your needs.	Universal Platforms Maximum flexibility for using a mix of different size labware on a single platform. See Universal Clamp Guide for clamp capacities. Purchase clamps separately.		11 x 13" (28 x 33 cm)	Platform without Clamps	30100 ¹	
			11 x 13" (28 x 33 cm)	Dual Stacked Platform without Clamps	30125	
			18 x 18" (45.7 x 45.7 cm)	Platform without Clamps	30110 ¹	
			18 x 18" (45.7 x 45.7 cm)	Dual Stacked Platform without Clamps	30128	
			18 x 24" (45.7 x 60.9 cm)	Platform without Clamps	30106	
	Dedicated Platforms Clamps come installed to provide maximum capacity.		11 x 13" (28 x 33 cm)	Platform with Clamps	See Dedicated Platforms on p. 11	
		18 x 18" (45.7 x 45.7 cm)	Platform with Clamps	See Dedicated Platforms on p. 11		
Clamps	Mix and match clamps for your Universal Platform.				See Universal Clamp Guide below	
Misc. Accessories	Adapter set for stacking two platforms (Models 30100 and 30110 only)				3522-3	
MaxQ 3000						Model No.
Platforms Choose the platform that best fits your needs.	Universal Platforms Maximum flexibility for using a mix of different size labware on a single platform. See Universal Clamp Guide for clamp capacities. Purchase clamps separately.		30 x 18" (76 x 45.7 cm)	Platform without Clamps	30115BI	
			30 x 18" (76 x 45.7 cm)	Dual Stacked Platform without Clamps	30124	
			36 x 24" (91 x 61 cm)	Platform without Clamps	30120BI	
			30 x 18" (76 x 45.7 cm)	Platform with Clamps	See Dedicated Platforms on p. 11	
			36 x 24" (91 x 61 cm)	Platform with Clamps	See Dedicated Platforms on p. 11	
	Dedicated Platforms Clamps come installed to provide maximum capacity.		30 x 18" (76 x 45.7 cm)	Platform with Clamps	See Universal Clamp Guide below	
Clamps	Mix and match clamps for your Universal Platform.				See Universal Clamp Guide below	
Misc. Accessories	Adapter set for stacking two platforms (Models 30100 and 30110 only)				3522-3	



Universal Clamp Guide

Mix and match to customize the Universal Platform for your unique needs. Clamps sold as individual units.

Clamp	Model No.	Clamp Capacity Guide Max. clamp capacity of vessels for the Universal Platform
MaxQ 4450		
11 x 13" (28 x 33 cm)		
Flask Clamp Starter Kit, includes (1) microplate clamp, (2) 125 ml flask clamps, (4) 250 ml flask clamps, (4) 500 ml flask clamps, (2) 1L flask clamps, (2) 2L flask clamps	30129	

Dedicated Platforms with Clamps

Maximize capacity by choosing your platform with pre-installed clamps.

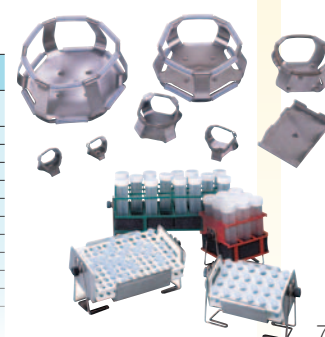
Clamps come installed to provide maximum capacity			
Platform Size	Description	Capacity	Model No.
11 x 13" (28 x 33 cm)	10 ml Erlenmeyer Flask	60	3523-1
	25 ml Erlenmeyer Flask	30	3523-2
	50 ml Erlenmeyer Flask	30	3523-3
	125 ml Erlenmeyer Flask	15	3523-4
	250 ml Erlenmeyer Flask	10	3523-5
	500 ml Erlenmeyer Flask	6	3523-7
	1L Erlenmeyer Flask	4	3523-8



Universal Clamp Guide

Mix and match to customize the Universal Platform for your unique needs. Clamps sold as individual units.

Clamp	Model No.	Clamp Capacity Guide Max. clamp capacity of vessels for the Universal Platform
Flask Clamp Starter Kit, includes (1) microplate clamp, (2) 25 ml flask clamps, (2) 50 ml flask clamps, (2) 125 ml flask clamps, (4) 250/300 ml flask clamps, (4) 500 ml flask clamps, (2) 1L flask clamps, (2) 2L flask clamps and replacement screws	236099	–
Microplate	236025	18
25 ml Erlenmeyer Flask	236010	91
50 ml Erlenmeyer Flask	236011	91
125 ml Erlenmeyer Flask	236012	39
250/300 ml Erlenmeyer Flask	236013	30
500 ml Erlenmeyer Flask	236014	24
1L Erlenmeyer Flask	236015	12
2L Erlenmeyer Flask	236016	11
2800 ml Fernback Flask	236019	6
Adhesive Flat Mat, 9 x 9" (23 x 23 cm)	300349 ¹	–
Replacement Screws: (50) #10-24 x 5/16" countersink Phillips head screws for clamps and (6) 1/4-20 x 3/4" countersink flat head socket for platforms and (2) 1/4-20 x 1-1/2" hex socket set screws	194046	





MaxQ 2000 & 3000 Open Air Platform Shakers

Increase shaking capacity in a small footprint

Choose from several platform sizes to increase capacity by simply changing the platform

- Small shaker footprint saves valuable bench space
- Units operate in temperature range of 0°C to +40°C and humidity conditions from 20 to 80% non-condensing enabling them to be used in a variety of environments
- Triple eccentric drives handle heavy platform loads (MaxQ 2000: 35 lbs, MaxQ 3000: 50 lbs)

Digital CO₂ resistant option

- Electrical and mechanical components have been treated to protect from up to 10% CO₂ and 90% humidity conditions non-condensing
- Prevents humidity and CO₂ from reacting with electrical components and forming carbolic acid in a CO₂* environment

*Some CO₂ incubators may require cooling. Please consult your manufacturer.

Applications

- Cell culture
- Solubility studies
- Extraction procedures
- Diagnostic tests
- General mixing
- Bacterial suspensions
- Staining and destaining
- Washing procedures
- Hybridization



Ordering Information

Select the right shaker for your needs and customize by selecting either a **Universal Platform** or a **Dedicated Platform**.

MaxQ 2000 and MaxQ 3000 Shaker

Shaker Options	Speed Range (rpm)	Orbit Diameter In. (cm)	Max. Load Lb. (kg)	Overall Dimensions Inches (cm)			Shipping Weight Lb. (kg)	Model No. 120V, 50/60 Hz	Model No. 240V, 50/60 Hz
				L	W	H			
MaxQ 2000 – Small Open Air Shakers									
Analog	40–400	0.75 (1.9)	35 (15.9)	17.4 (44.2)	13.5 (34.3)	6.4 (16.3)	47 (21.3)	SHKA2000	SHKA2000-1CE
Digital	15–500 ±1	0.75 (1.9)	35 (15.9)	17.4 (44.2)	13.5 (34.3)	6.4 (16.3)	47 (21.3)	SHKE2000	SHKE2000-1CE
Digital, CO ₂ Resistant	15–500 ±1	0.75 (1.9)	35 (15.9)	17.4 (44.2)	13.5 (34.3)	6.4 (16.3)	47 (21.3)	SHKE2000C02	SHKE2000C02-1CE
MaxQ 3000 – Large Open Air Shakers									
Analog	40–400	1.0 (2.54)	50 (22.7)	25.8 (65.5)	29.4 (74.4)	9.7 (24.6)	207 (93.9)	SHKA3000	SHKA3000-1CE
Digital	15–500 ±1	1.0 (2.54)	50 (22.7)	25.8 (65.5)	29.4 (74.4)	9.7 (24.6)	207 (93.9)	SHKE3000	SHKE3000-1CE

Platforms

Maximize flexibility by choosing your platform and selecting a mixture of clamps.

MaxQ 2000				Model No.
Platforms Choose the platform that best fits your needs.	Universal Platforms Maximum flexibility for using a mix of different size labware on a single platform. See Universal Clamp Guide for clamp capacities. Purchase clamps separately.	11 x 13" (28 x 33 cm)	Platform without Clamps	30100 ¹
		11 x 13" (28 x 33 cm)	Dual Stacked Platform without Clamps	30125
		18 x 18" (45.7 x 45.7 cm)	Platform without Clamps	30110 ¹
		18 x 18" (45.7 x 45.7 cm)	Dual Stacked Platform without Clamps	30128
		18 x 24" (45.7 x 60.9 cm)	Platform without Clamps	30106
	Dedicated Platforms Clamps come installed to provide maximum capacity.	11 x 13" (28 x 33 cm)	Platform with Clamps	See Dedicated Platforms on p. 11
		18 x 18" (45.7 x 45.7 cm)	Platform with Clamps	See Dedicated Platforms on p. 11
Clamps	Mix and match clamps for your Universal Platform.			See Universal Clamp Guide below
Misc. Accessories	Adapter set for stacking two platforms (Models 30100 and 30110 only)			3522-3
MaxQ 3000				Model No.
Platforms Choose the platform that best fits your needs.	Universal Platforms Maximum flexibility for using a mix of different size labware on a single platform. See Universal Clamp Guide for clamp capacities. Purchase clamps separately.	30 x 18" (76 x 45.7 cm)	Platform without Clamps	30115BI
		30 x 18" (76 x 45.7 cm)	Dual Stacked Platform without Clamps	30124
		36 x 24" (91 x 60.9 cm)	Platform without Clamps	30120BI
	Dedicated Platforms Clamps come installed to provide maximum capacity.	30 x 18" (76 x 45.7 cm)	Platform with Clamps	See Dedicated Platforms on p. 11
		36 x 24" (91 x 60.9 cm)	Platform with Clamps	See Dedicated Platforms on p. 11
				See Universal Clamp Guide below
Clamps	Mix and match clamps for your Universal Platform.			

¹Stackable, purchase of two platforms and adapter set required for stacking

Universal Clamp Guide

Mix and match to customize the Universal Platform for your unique needs. Clamps sold as individual units.

Clamp	Model No.	Clamp Capacity Guide Maximum clamp capacity of vessels for the Universal Platform				
		MaxQ 2000		MaxQ 3000		
		11 x 13" (28 x 33 cm)	18 x 18" (45.7 x 45.7 cm)	18 x 24" (45.7 x 60.9 cm)	30 x 18" (76 x 45.7 cm)	36 x 24" (91 x 60.9 cm)
Flask Clamp Starter Kit, includes (1) microplate clamp, (2) 125 ml flask clamps, (4) 250 ml flask clamps, (4) 500 ml flask clamps, (2) 1L flask clamps, (2) 2L flask clamps	30129					
Microplate/Deep-well plate	30175	5	10	15	18	29
10 ml Erlenmeyer Flask	30150BI	60	113	157	112	160
25 ml Erlenmeyer Flask	30151	60	64	80	112	160
50 ml Erlenmeyer Flask	30152BI	30	32	40	112	160
125 ml Erlenmeyer Flask	30153	13	32	40	44	80
250 ml Erlenmeyer Flask	30154BI	9	16	24	24	40
300 ml Erlenmeyer Flask	30155	7	16	20	20	40
500 ml Erlenmeyer Flask	30156BI	6	16	20	18	40
1L Erlenmeyer Flask	30157BI	4	9	10	12	21
2L Erlenmeyer Flask	30158	1	6	5	6	11
4L Erlenmeyer Flask	30159	1	4	4	6	11
6L Erlenmeyer Flask	30160	1	2	3	3	6
2500 ml Low Form Culture Flask	30161	1	1	2	3	6
2800 ml Fernbach Flask	30162	1	4	4	5	8
Adhesive Flask Mat, 9 x 9" (23 x 23 cm)	300349 ³	–	–	–	–	–
Test Tube Racks – Full Size						
10–13 mm, red, 6 x 12 array	30180BI	3	6	8	13	16
14–16 mm, orange, 6 x 12 array	30182 ¹	2	4	6	7	10
17–20 mm, white, 4 x 10 array	30184	3	5	6	9	14
21–25 mm, blue, 4 x 10 array	30186	2	3	4	7	7
26–30 mm, green, 3 x 8 array	30188 ²	2	4	6	7	7
Microcentrifuge, 1.5 ml, blue, 8 x 12 array	30190	2	5	6	8	10
Test Tube Racks – Half Size						
10–13 mm, red, 6 x 6 array	30181	6	12	15	21	25
14–16 mm, orange, 6 x 6 array	30183 ¹	4	6	8	10	12
17–20 mm, white, 4 x 5 array	30185	4	8	13	18	20
21–25 mm, blue, 4 x 4 array	30187	4	6	9	10	15
26–30 mm, green, 3 x 3 array	30189 ²	6	9	12	15	15
Microcentrifuge, 1.5 ml, blue, 4 x 6 array	30191	4	8	10	14	20

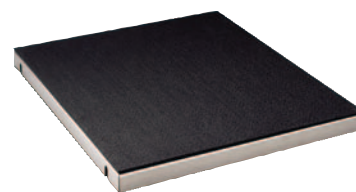
¹Fits 15 ml centrifuge tubes ²Fits 50 ml centrifuge tubes ³Can be cut to fit, reusable

Dedicated Platforms with Clamps

Maximize capacity by choosing your platform with pre-installed clamps.

MaxQ 2000 / MaxQ 2508 / MaxQ 2506 Shakers

Clamps come installed to provide maximum capacity			
Platform Size		Capacity	Model No.
11 x 13" (28 x 33 cm)	10 ml Erlenmeyer Flask	60	3523-1
	25 ml Erlenmeyer Flask	30	3523-2
	50 ml Erlenmeyer Flask	30	3523-3
	125 ml Erlenmeyer Flask	15	3523-4
	250 ml Erlenmeyer Flask	10	3523-5
	500 ml Erlenmeyer Flask	6	3523-7
	1L Erlenmeyer Flask	4	3523-8
	2L Erlenmeyer Flask	4	3523-9
	Separatory Funnel (500 ml to 2L)	2	3523-39
	Utility Tray	—	3523-46
	11 x 13" Adjustable Vessel Platform	—	3523-49
18 x 18" (45.7 x 45.7 cm)	5 Tier, holds platelet bags (10 x 10")	5 bags	3523-51
	10 ml Erlenmeyer Flask	113	3524-1
	25 ml Erlenmeyer Flask	64	3524-2
	50 ml Erlenmeyer Flask	64	3524-3
	125 ml Erlenmeyer Flask	32	3524-4
	250 ml Erlenmeyer Flask	25	3524-5
	300 ml Erlenmeyer Flask	16	3524-6
	500 ml Erlenmeyer Flask	16	3524-7
	1L Erlenmeyer Flask	9	3524-8
	2L Erlenmeyer Flask	5	3524-9
	Separatory Funnel (500 ml to 2L)	3	3524-49
	Utility Tray	—	3524-46
	18 x 18" adjustable vessel platform without bottom for MaxQ 4000 and 6000 series shakers	—	3524-60
	18 x 18" adjustable vessel platform with bottom for MaxQ 2000 shaker	—	3523-52
	10 ml beaker	152	3524-35
	20 ml beaker	104	3524-36
	30 ml beaker	104	3524-37
	100 ml beaker	44	3524-38
	250 ml beaker	25	3524-39
	400 ml beaker	25	3524-40
	600 ml beaker	16	3524-41



Utility Tray
Model No. 3523-46



11 x 13" Adjustable Vessel Platform
Model No. 3523-49



18 x 18", 50 ml Erlenmeyer Flask Platform
Model No. 3524-3

MaxQ 3000 Shaker

Clamps come installed to provide maximum capacity			
Platform Size		Capacity	Model No.
30 x 18" (76 x 45.7 cm)	10 ml Erlenmeyer Flask	112	3599-1
	25 ml Erlenmeyer Flask	112	3599-2
	50 ml Erlenmeyer Flask	112	3599-3
	125 ml Erlenmeyer Flask	56	3599-4
	250 ml Erlenmeyer Flask	40	3599-5
	300 ml Erlenmeyer Flask	24	3599-6
	500 ml Erlenmeyer Flask	24	3599-7
	1L Erlenmeyer Flask	12	3599-8
	2L Erlenmeyer Flask	12	3599-9
	4L Erlenmeyer Flask	6	3599-10
	6L Erlenmeyer Flask	4	3599-11
	Separatory Funnel (500 ml to 2L)	10	3599-49
	Utility Tray	—	3599-46
	18 x 30" Adjustable Vessel Platform	—	3599-63
	2500 ml Low Form Culture Flask	5	3599-12
	2800 ml Fernbach Flask	6	3599-13
36 x 24" (91 x 60.9 cm)	50 ml Erlenmeyer Flask	160	3599-52
	125 ml Erlenmeyer Flask	80	3599-53
	250 ml Erlenmeyer Flask	70	3599-54
	500 ml Erlenmeyer Flask	40	3599-56
	1L Erlenmeyer Flask	18	3599-57
	2L Erlenmeyer Flask	15	3599-58
	4L Erlenmeyer Flask	8	3599-59
	6L Erlenmeyer Flask	6	3599-60
	Separatory Funnel (500 ml to 2L)	16	3599-96
	2500 ml Low Form Culture Flask	6	3599-61
	2800 ml Fernbach Flask	8	3599-62



Dedicated Separatory Funnel Platform
Model No. 3524-49



30 x 18" Dual Tiered Platforms,
Model No. 30124 (See Accessories table on page 10)

Dual Action Orbital and Reciprocating Open Air Platform Shakers

Increased flexibility with choice of reciprocating or orbital shakers

- Analog operating system is affordably priced
- Interchangeable 11 x 13", 18 x 18" and 18 x 24" platforms are available to accommodate a variety of labware
- On dual action models, control lever changes shaking motion while unit is stationary or in operation
- Provides back-and-forth motion or circular orbital motion for a variety of applications
- Operates in temperature ranges of 4 to 40° and humidity conditions of 20–80% non-condensing for use in incubators, warm rooms, environmental chambers and refrigerators.

Applications

- | | |
|--|------------------------------------|
| • Extractions | • Growth of bacteria |
| • Mixing blood samples | • Dissolution studies |
| • Silver staining of polyacrylamide gels | • Staining of electrophoresis gels |



Ordering Information

Select the right shaker for your needs and customize by selecting either a **Universal Platform** or a **Dedicated Platform**.

Thermo Scientific Dual-Action Orbital and Reciprocating Shakers

Shaker Options	Speed Range (rpm)	Orbit Diameter Inch (cm)	Max. Load Lb. (kg)	Overall Dimensions Inches (cm)			Shipping Weight Lb. (kg)	Model No. 120V, 50/60 Hz	Model No. 240V, 50/60 Hz
				L	W	H			
MaxQ 2508 – Dual Action Orbital and Reciprocating Shakers									
Analog	40–400	0.4 (1.2)	15 (6.8)	17.4 (44.2)	13.5 (34.3)	7 (17.8)	38 (17.2)	SHKA2508	SHKA2508-1CE
MaxQ 2506 – Reciprocating Shakers									
Analog	10–250	Adjustable from 0.5 to 1.5 (1.2 to 3.8)	15 (6.8)	17.4 (44.2)	13.5 (34.3)	7 (17.8)	27 (12.3)	SHKA2506	SHKA2506-1

Platforms

Maximize flexibility by choosing your platform and selecting a mixture of clamps.

MaxQ 2508 and 2506 Series				Model No.
Platforms Choose the platform that best fits your needs.	Universal Platforms Maximum flexibility for using a mix of different size labware on a single platform. See Universal Clamp Guide for clamp capacities. Purchase clamps separately.	11 x 13" (28 x 33 cm)	Platform without Clamps	30100 ¹
		11 x 13" (28 x 33 cm)	Dual Stacked Platform without Clamps	30125
		18 x 18" (45.7 x 45.7 cm)	Platform without Clamps	30110 ¹
		18 x 18" (45.7 x 45.7 cm)	Dual Stacked Platform without Clamps	30128
		18 x 24" (45.7 x 60.9 cm)	Platform without Clamps	30106
	Dedicated Platforms Clamps come installed to provide maximum capacity	11 x 13" (28 x 33 cm)	Platform with Clamps	See Dedicated Platforms on p. 11
		18 x 18" (45.7 x 45.7 cm)	Platform with Clamps	See Dedicated Platforms on p. 11
Clamps	Mix and match clamps for your Universal Platform.			See Universal Clamp Guide below

¹Stackable, purchase of two platforms and adapter set required for stacking

Universal Clamp Guide

Mix and match to customize the Universal Platform for your unique needs. Clamps sold as individual units.

Clamp	Model No.	Clamp Capacity Guide Max. clamp capacity of vessels for the Universal Platform		
		MaxQ 2508 and 2506		
		11 x 13" (28 x 33 cm)	18 x 18" (45.7 x 45.7 cm)	18 x 24" (45.7 x 60.9 cm)
Flask Clamp Starter Kit, includes (1) microplate clamp, (2) 125 ml flask clamps, (4) 250 ml flask clamps, (4) 500 ml flask clamps, (2) 1L flask clamps, (2) 2L flask clamps	30129			
Microplate/Deep-well plate	30175	5	10	15
10 ml Erlenmeyer Flask	30150BI	60	113	157
25 ml Erlenmeyer Flask	30151	60	64	80
50 ml Erlenmeyer Flask	30152BI	30	32	40
125 ml Erlenmeyer Flask	30153	13	32	40
250 ml Erlenmeyer Flask	30154BI	9	16	24
300 ml Erlenmeyer Flask	30155	7	16	20
500 ml Erlenmeyer Flask	30156BI	6	16	20
1L Erlenmeyer Flask	30157BI	4	9	10
2L Erlenmeyer Flask	30158	1	6	5
4L Erlenmeyer Flask	30159	1	4	4
6L Erlenmeyer Flask	30160	1	2	3
2500 ml Low Form Culture Flask	30161	1	1	2
2800 ml Fernbach Flask	30162	1	4	4
Adhesive Flask Mat, 9 x 9" (23 x 23 cm)	300349 ³	–	–	–
Test Tube Racks – Full Size				
10–13 mm, red, 6 x 12 array	30180BI	3	6	8
14–16 mm, orange, 6 x 12 array	30182 ¹	2	4	6
17–20 mm, white, 4 x 10 array	30184	3	5	6
21–25 mm, blue, 4 x 10 array	30186	2	3	4
26–30 mm, green, 3 x 8 array	30188 ²	2	4	6
Microcentrifuge, 1.5 ml, blue, 8 x 12 array	30190	2	5	6
Test Tube Racks – Half Size				
10–13 mm, red, 6 x 6 array	30181	6	12	15
14–16 mm, orange, 6 x 6 array	30183 ¹	4	6	8
17–20 mm, white, 4 x 5 array	30185	4	8	13
21–25 mm, blue, 4 x 4 array	30187	4	6	9
26–30 mm, green, 3 x 3 array	30189 ²	6	9	12
Microcentrifuge, 1.5 ml, blue, 4 x 6 array	30191	4	8	10

¹Fits 15 ml centrifuge tubes ²Fits 50 ml centrifuge tubes ³Can be cut to fit, reusable

Miscellaneous Accessories

MaxQ 2508 and 2506 Series	Model No.
Adapter Set for stacking two platforms (Models 30100 and 30110 only)	3522-3



Five-Tier Blood Bag Platform
Model No. 3523-51

- 5 tier aluminum platform measures 13L x 11W x 14H in. (33 x 27.9 x 35.6 cm)
- Distance between platforms is 3.25" (8.26 cm)
- Each of the five platforms is equipped with a white vinyl ribbed mat
- Mix contents of 10 x 10 in (25.4 x 25.4 cm) bags of platlets used in platlet phoresis applications

MaxQ 4450 Compact Benchtop Incubated Shakers

Flexible shaking option for your applications at an affordable price

Combine incubated and refrigerated temperatures in an orbital shaker in a small footprint

- Holds up to four one liter flasks
- Requires minimal bench space
- Clear lid lets you view samples without disturbing chamber atmosphere
- Achieve temperature ranges from 20°C to 30°C when connected to a circulating chiller

Models available with cooling coil providing refrigerated atmosphere for plasmid purification and protein expression in bacteria



Applications

- Cell culture
- Extraction procedures
- General mixing
- Staining and destaining
- Hybridizations
- Solubility studies
- Plasmid purification
- Bacterial suspensions
- Washing procedures
- Protein expression in bacteria

Ordering Information

Select the right shaker for your needs and customize by selecting either a Universal Platform or a Dedicated Platform.

Thermo Scientific MaxQ 4450 Shaker

Shaker Options	Speed Range (rpm)	Orbit Diameter In. (cm)	Max. Load Lb. (kg)	Temperature Range and Accuracy	Temperature Uniformity	Overall Dimensions/ Chamber Dimensions Inches (cm)			Shipping Weight Lb. (kg)	Model No. 120V, 50/60 Hz	Model No. 240V, 50/60 Hz
						L	W	H			
MaxQ 4450 – Incubated Shaker											
Analog	40–400	0.75 (1.9)	35 (15.9)	5°C above ambient to 80°C ±0.1°C at 37°C in flask	±0.5°C at 37°C in flask	27.2 (69.1)/ 17.3 (43.9)	14.1 (35.8)/ 13.3 (33.8)	15.8 (40.1)/ 9 (22.9)	77 (35)	SHKA4450	SHKA4450-1CE
Digital	15–500 ±1	0.75 (1.9)	35 (15.9)	5°C above ambient to 80°C ±0.1°C at 37°C in flask	±0.5°C at 37°C in flask	27.2 (69.1)/ 17.3 (43.9)	14.1 (35.8)/ 13.3 (33.8)	15.8 (40.1)/ 9 (22.9)	77 (35)	SHKE4450	SHKE4450-1CE
MaxQ 4450 – Incubated Shaker with Cooling Coil (Requires Chiller)											
Analog	40–400	0.75 (1.9)	35 (15.9)	5°C below ambient to 80°C ±0.1°C at 37°C in flask	±0.5°C at 37°C in flask	27.2 (69.1)/ 17.3 (43.9)	14.1 (35.8)/ 13.3 (33.8)	15.8 (40.1)/ 9 (22.9)	77 (35)	SHKA4450CC	SHKA4450CC-1CE
Digital	15–500 ±1	0.75 (1.9)	35 (15.9)	5°C below ambient to 80°C ±0.1°C at 37°C in flask	±0.5°C at 37°C in flask	27.2 (69.1)/ 17.3 (43.9)	14.1 (35.8)/ 13.3 (33.8)	15.8 (40.1)/ 9 (22.9)	77 (35)	SHKE4450CC	SHKE4450CC-1CE

Platforms

Maximize flexibility by choosing your platform and selecting a mixture of clamps.

MaxQ 4450				Model. No.
Platforms Choose the platform that best fits your needs.	Universal Platforms Maximum flexibility for using a mix of different size labware on a single platform. See Universal Clamp Guide for clamp capacities. Purchase clamps separately.	11 x 13" (28 x 33 cm)	Platform without Clamps	30100
	Dedicated Platforms Clamps come installed to provide maximum capacity.	11 x 13" (28 x 33 cm)	Platform with Clamps	See Dedicated Platforms below
Clamps	Mix and match clamps for your Universal Platform.			See Universal Clamp Guide below

Universal Clamp Guide

Mix and match to customize the Universal Platform for your unique needs. Clamps sold as individual units.

Clamp	Model No.	Clamp Capacity Guide Max. clamp capacity of vessels for the Universal Platform
		MaxQ 4450 11 x 13" (28 x 33 cm)
Flask Clamp Starter Kit, includes (1) microplate clamp, (2) 125 ml flask clamps, (4) 250 ml flask clamps, (4) 500 ml flask clamps, (2) 1L flask clamps, (2) 2L flask clamps	30129	
Microplate/Deep-well plate	30175	5
10 ml Erlenmeyer Flask	30150BI	60
25 ml Erlenmeyer Flask	30151	60
50 ml Erlenmeyer Flask	30152BI	30
125 ml Erlenmeyer Flask	30153	13
250 ml Erlenmeyer Flask	30154BI	9
300 ml Erlenmeyer Flask	30155	7
500 ml Erlenmeyer Flask	30156BI	6
1L Erlenmeyer Flask	30157BI	4
2500 ml Low Form Culture Flask	30161	1
Adhesive Flask Mat, 9 x 9" (23 x 23 cm)	300349 ³	–
Test Tube Racks – Full Size		
10–13 mm, red, 6 x 12 array	30180BI	3
14–16 mm, orange, 6 x 12 array	30182 ¹	2
17–20 mm, white, 4 x 10 array	30184	3
21–25 mm, blue, 4 x 10 array	30186	2
26–30 mm, green, 3 x 8 array	30188 ²	2
Microcentrifuge, 1.5 ml, blue, 8 x 12 array	30190	2
Test Tube Racks – Half Size		
10–13 mm, red, 6 x 6 array	30181	6
14–16 mm, orange, 6 x 6 array	30183 ¹	4
17–20 mm, white, 4 x 5 array	30185	4
21–25 mm, blue, 4 x 4 array	30187	4
26–30 mm, green, 3 x 3 array	30189 ²	6
Microcentrifuge, 1.5 ml, blue, 4 x 6 array	30191	4

¹Fits 15 ml centrifuge tubes ²Fits 50 ml centrifuge tubes ³Can be cut to fit, reusable

Dedicated Platforms with Clamps

Maximize capacity by choosing your platform with pre-installed clamps.

Clamps come installed to provide maximum capacity			
Platform Size	Description	Capacity	Model No.
11 x 13" (28 x 33 cm)	10 ml Erlenmeyer Flask	60	3523-1
	25 ml Erlenmeyer Flask	30	3523-2
	50 ml Erlenmeyer Flask	30	3523-3
	125 ml Erlenmeyer Flask	15	3523-4
	250 ml Erlenmeyer Flask	10	3523-5
	500 ml Erlenmeyer Flask	6	3523-7
	1L Erlenmeyer Flask	4	3523-8

Miscellaneous Accessories

MaxQ 4450	Model No.
Upright chiller, 6L reservoir, required to achieve temperatures from 20°C to 30°C, 120V	SHK4450CH
Upright chiller, 6L reservoir, required to achieve temperatures from 20°C to 30°C, 240V	SHK4450CH-1CE



Unwire test tube rack clamps

MaxQ 4000 Large Benchtop Incubated and Refrigerated Shakers

Spacious chamber in a footprint designed for the benchtop

Combines incubated and refrigerated temperatures in an orbital shaker with a spacious chamber

- Large Chamber holds six 2L flasks
- Clear acrylic lid provides high visibility for sample harvesting
- Safety interlock protects operator by stopping platform motion when lid is lifted

Applications

- Cell culture
- Extraction procedures
- General mixing
- Staining and destaining
- Hybridizations
- Solubility studies
- Plasmid purification
- Bacterial suspensions
- Washing procedures
- Protein expression



Ordering Information

Select the right shaker for your needs and customize by selecting either a Universal Platform or a Dedicated Platform.

MaxQ 4000 Shaker

Shaker Options	Speed Range (rpm)	Orbit Diameter In. (cm)	Max. Load Lb. (kg)	Temperature Range and Accuracy	Temperature Uniformity	Overall Dimensions/ Chamber Dimensions Inches (cm)			Shipping Weight Lb. (kg)	Model No. 120V, 50/60 Hz	Model No. 240V, 50/60 Hz
						L	W	H			
MaxQ 4000 – Large Incubated Benchtop Shaker											
Analog	40–400	0.75 (1.9)	50 (22.7)	10°C above ambient to 60°C ±0.1°C at 37°C in flask	±0.5°C at 37°C in flask	32 (81.3)/ 20 (50.8)	22.5 (57.2)/ 21 (53.3)	22 (55.9)/ 13 (33)	167 (75.8)	SHKA4000	SHKA4000-1CE
Digital	15–500 ±1	0.75 (1.9)	50 (22.7)	10°C above ambient to 60°C ±0.1°C at 37°C in flask	±0.5°C at 37°C in flask	32 (81.3)/ 20 (50.8)	22.5 (57.2)/ 21 (53.3)	22 (55.9)/ 13 (33)	167 (75.8)	SHKE4000	SHKE4000-1CE
MaxQ 4000 – Large Incubated High Temperature Benchtop Shaker											
Analog	40–400	0.75 (1.9)	50 (22.7)	10°C above ambient to 80°C ±0.1°C at 37°C in flask	±0.5°C at 37°C in flask	32 (81.3)/ 20 (50.8)	22.5 (57.2)/ 21 (53.3)	22 (55.9)/ 13 (33)	167 (75.8)	SHKA4000-5	SHKA4000-6CE
Digital	15–500 ±1	0.75 (1.9)	50 (22.7)	10°C above ambient to 80°C ±0.1°C at 37°C in flask	±0.5°C at 37°C in flask	32 (81.3)/ 20 (50.8)	22.5 (57.2)/ 21 (53.3)	22 (55.9)/ 13 (33)	167 (75.8)	SHKE4000-5	SHKE4000-6CE
MaxQ 4000 – Large Incubated and Refrigerated Benchtop Shaker											
Analog	40–400	0.75 (1.9)	50 (22.7)	15°C below ambient to 60°C ±0.1°C at 37°C in flask	±0.5°C at 37°C in flask	34 (86.4)/ 20 (50.8)	22.5 (57.2)/ 21 (53.3)	22 (55.9)/ 13 (33)	212 (96.2)	SHKA4000-7	SHKA4000-8CE
Digital	15–500 ±1	0.75 (1.9)	50 (22.7)	15°C below ambient to 60°C ±0.1°C at 37°C in flask	±0.5°C at 37°C in flask	34 (86.4)/ 20 (50.8)	22.5 (57.2)/ 21 (53.3)	22 (55.9)/ 13 (33)	212 (96.2)	SHKE4000-7	SHKE4000-8CE

Platforms

Maximize flexibility by choosing your platform and selecting a mixture of clamps.

MaxQ 4000				Model No.
Platforms Choose the platform that best fits your needs.	Universal Platforms Maximum flexibility for using a mix of different size labware on a single platform. See Universal Clamp Guide for clamp capacities. Purchase clamps separately.	18 x 18" (45.7 x 45.7 cm)	Platform without Clamps	30110
	Dedicated Platforms Clamps come installed to provide maximum capacity.	18 x 18" (45.7 x 45.7 cm)	Platform with Clamps	See Dedicated Platforms below
Clamps	Mix and match clamps for your Universal Platform.			See Universal Clamp Guide below

Universal Clamp Guide

Mix and match to customize the Universal Platform for your unique needs. Clamps sold as individual units.

Clamp	Model No.	Clamp Capacity Guide Max. clamp capacity of vessels for the Universal Platform
MaxQ 4000		
18 x 18" (45.7 x 45.7 cm)		
Flask Clamp Starter Kit, includes (1) microplate clamp, (2) 125 ml flask clamps, (4) 250 ml flask clamps, (4) 500 ml flask clamps, (2) 1L flask clamps, (2) 2L flask clamps	30129	
Microplate/Deep-well plate	30175	10
10 ml Erlenmeyer Flask	30150BI	113
25 ml Erlenmeyer Flask	30151	64
50 ml Erlenmeyer Flask	30152BI	32
125 ml Erlenmeyer Flask	30153	32
250 ml Erlenmeyer Flask	30154BI	16
300 ml Erlenmeyer Flask	30155	16
500 ml Erlenmeyer Flask	30156BI	16
1L Erlenmeyer Flask	30157BI	9
2L Erlenmeyer Flask	30158	6
2500 ml Low Form Culture Flask	30161	1
2800 ml Fernbach Flask	30162	4
Adhesive Flask Mat, 9 x 9" (23 x 23cm)	300349 ³	–
Test Tube Racks – Full Size		
10–13 mm, red, 6 x 12 array	30180BI	6
14–16 mm, orange, 6 x 12 array	30182 ¹	4
17–20 mm, white, 4 x 10 array	30184	5
21–25 mm, blue, 4 x 10 array	30186	3
26–30 mm, green, 3 x 8 array	30188 ²	4
Microcentrifuge, 1.5 ml, blue, 8 x 12 array	30190	5
Test Tube Racks – Half Size		
10–13 mm, red, 6 x 6 array	30181	12
14–16 mm, orange, 6 x 6 array	30183 ¹	6
17–20 mm, white, 4 x 5 array	30185	8
21–25 mm, blue, 4 x 4 array	30187	6
26–30 mm, green, 3 x 3 array	30189 ²	9
Microcentrifuge, 1.5 ml, blue, 4 x 6 array	30191	8

¹Fits 15 ml centrifuge tubes ²Fits 50 ml centrifuge tubes ³Can be cut to fit, reusable

Dedicated Platforms with Clamps

Maximize capacity by choosing your platform with pre-installed clamps.

Clamps come installed to provide maximum capacity			
Platform Size	Description	Capacity	Model No.
18 x 18" (45.7 x 45.7 cm)	10 ml Erlenmeyer Flask	113	3524-1
	25 ml Erlenmeyer Flask	64	3524-2
	50 ml Erlenmeyer Flask	64	3524-3
	125 ml Erlenmeyer Flask	32	3524-4
	250 ml Erlenmeyer Flask	25	3524-5
	300 ml Erlenmeyer Flask	16	3524-6
	500 ml Erlenmeyer Flask	16	3524-7
	1L Erlenmeyer Flask	9	3524-8
	2L Erlenmeyer Flask	5	3524-9
	10 ml Beaker	152	3524-35
	20 ml Beaker	104	3524-36
	30 ml Beaker	104	3524-37
	100 ml Beaker	44	3524-38
	250 ml Beaker	25	3524-39
	400 ml Beaker	25	3524-40
	600 ml Beaker	16	3524-41
	Utility Tray	–	3524-46
	18" x 18" Adjustable Vessel Platform without bottom	–	3524-60

Miscellaneous Accessories

MaxQ 4000	Model No.
Gassing manifold with 8 outlets (customer installed)	SHK4000-8GM

Note: Optional gassing manifold enables direct gassing into flasks for anaerobic cultures.

MaxQ 5000 Incubated and Refrigerated Floor Shakers

Complete large capacity applications with ease

Combines incubated and refrigerated temperatures with an orbital shaker for large capacity applications

- Large chamber holds four 6L flasks
- Easy-access drain system with quick disconnect fitting permits easy clean up of spills
- Foot pedal opens lid for hands free operation
- Retractable foot casters allow easy positioning in the lab
- Observe contents through large viewing window
- Access ports in side walls for probes, thermocouples or sensors

Applications

- | | |
|-------------------------|---------------------------|
| • Cell culture | • Bacterial suspensions |
| • Solubility studies | • Staining and destaining |
| • Extraction procedures | • Washing procedures |
| • General mixing | • Hybridizations |
| • Protein expression | • Plasmid purification |



Ordering Information

Select the right shaker for your needs and customize by selecting either a Universal Platform or a Dedicated Platform.

MaxQ 5000 Shaker

Shaker Options	Speed Range (rpm)	Orbit Diameter In. (cm)	Max. Load Lb. (kg)	Temperature Range and Accuracy	Temperature Uniformity	Overall Dimensions/ Chamber Dimensions Inches (cm)			Shipping Weight Lb. (kg)	Model. No. 120V, 50/60 Hz	Model No. 240V, 50/60 Hz
						L	W	H			
MaxQ 5000 – Large Incubated Floor Shaker											
Analog	40–400	1.0 (2.54)	75 (34)	10°C above ambient to 60°C ±0.1°C at 37°C in flask	±0.5°C at 37°C in flask	32 (81.3)/ 21.9 (55.6)	41 (104.1)/ 34.2 (86.9)	41 (104.1)/ 21.2 (53.8)	476 (215.9)	SHKA5000	SHKA5000-1CE
Digital	15–500 ±1	1.0 (2.54)	75 (34)	10°C above ambient to 60°C ±0.1°C at 37°C in flask	±0.5°C at 37°C in flask	32 (81.3)/ 21.9 (55.6)	41 (104.1)/ 34.2 (86.9)	41 (104.1)/ 21.2 (53.8)	476 (215.9)	SHKE5000	SHKE5000-1CE
MaxQ 5000 – Large Incubated and Refrigerated Floor Shaker											
Analog	40–400	1.0 (2.54)	75 (34)	15°C below ambient to 60°C ±0.1°C at 37°C in flask	±0.5°C at 37°C in flask	32 (81.3)/ 21.9 (55.6)	41 (104.1)/ 34.2 (86.9)	41 (104.1)/ 21.2 (53.8)	512 (232.2)	SHKA5000-7	SHKA5000-8CE
Digital	15–500 ±1	1.0 (2.54)	75 (34)	15°C below ambient to 60°C ±0.1°C at 37°C in flask	±0.5°C at 37°C in flask	32 (81.3)/ 21.9 (55.6)	41 (104.1)/ 34.2 (86.9)	41 (104.1)/ 21.2 (53.8)	512 (232.2)	SHKE5000-7	SHKE5000-8CE

Platforms

Maximize flexibility by choosing your platform and selecting a mixture of clamps.

MaxQ 5000					Model. No.
Platforms Choose the platform that best fits your needs.	Universal Platforms Maximum flexibility for using a mix of different size labware on a single platform. See Universal Clamp Guide for clamp capacities. Purchase clamps separately.	30 x 18" (76 x 45.7 cm)	Platform without Clamps	30115BI	
	Dedicated Platforms Clamps come installed to provide maximum capacity.	30 x 18" (76 x 45.7 cm)	Platform with Clamps	See Dedicated Platforms below	
Clamps	Mix and match clamps for your Universal Platform.			See Universal Clamp Guide below	

Universal Clamp Guide

Mix and match to customize the Universal Platform for your unique needs. Clamps sold as individual units.

Clamp	Model No.	Clamp Capacity Guide Max. clamp capacity of vessels for the Universal Platform
		MaxQ 5000
		30 x 18" (76 x 45.7 cm)
Flask Clamp Starter Kit, includes (1) microplate clamp, (2) 125 ml flask clamps, (4) 250 ml flask clamps, (4) 500 ml flask clamps, (2) 1L flask clamps, (2) 2L flask clamps	30129	
Microplate/Deep-well plate	30175	18
10 ml Erlenmeyer Flask	30150BI	112
25 ml Erlenmeyer Flask	30151	112
50 ml Erlenmeyer Flask	30152BI	112
125 ml Erlenmeyer Flask	30153	44
250 ml Erlenmeyer Flask	30154BI	24
300 ml Erlenmeyer Flask	30155	20
500 ml Erlenmeyer Flask	30156BI	18
1L Erlenmeyer Flask	30157BI	12
2L Erlenmeyer Flask	30158	6
4L Erlenmeyer Flask	30159	6
6L Erlenmeyer Flask	30160	3
2500 ml Low Form Culture Flask	30161	3
2800 ml Fernbach Flask	30162	5
Adhesive Flask Mat, 9 x 9" (23 x 23 cm)	300349 ³	–
Test Tube Racks – Full Size		
10–13 mm, red, 6 x 12 array	30180BI	13
14–16 mm, orange, 6 x 12 array	30182 ¹	7
17–20 mm, white, 4 x 10 array	30184	9
21–25 mm, blue, 4 x 10 array	30186	7
26–30 mm, green, 3 x 8 array	30188 ²	7
Microcentrifuge, 1.5 ml, blue, 8 x 12 array	30190	8
Test Tube Racks – Half Size		
10–13 mm, red, 6 x 6 array	30181	21
14–16 mm, orange, 6 x 6 array	30183 ¹	10
17–20 mm, white, 4 x 5 array	30185	18
21–25 mm, blue, 4 x 4 array	30187	10
26–30 mm, green, 3 x 3 array	30189 ²	15
Microcentrifuge, 1.5 ml, blue, 4 x 6 array	30191	14

¹Fits 15 ml centrifuge tubes

²Fits 50 ml centrifuge tubes

³Can be cut to fit, reusable

Dedicated Platforms with Clamps

Maximize capacity by choosing your platform with pre-installed clamps.

Clamps come installed to provide maximum capacity			
Platform Size		Capacity	Model No.
30 x 18" (76 x 45.7 cm)	10 ml Erlenmeyer Flask	112	3599-1
	25 ml Erlenmeyer Flask	112	3599-2
	50 ml Erlenmeyer Flask	112	3599-3
	125 ml Erlenmeyer Flask	56	3599-4
	250 ml Erlenmeyer Flask	40	3599-5
	300 ml Erlenmeyer Flask	24	3599-6
	500 ml Erlenmeyer Flask	24	3599-7
	1L Erlenmeyer Flask	12	3599-8
	2L Erlenmeyer Flask	12	3599-9
	4L Erlenmeyer Flask	6	3599-10
	6L Erlenmeyer Flask	4	3599-11
	2500 ml Low Form Culture Flask	5	3599-12
	2800 ml Fernbach Flask	6	3599-13
	Utility Tray	–	3599-46
	Adjustable Vessel Platform	–	3599-63

Miscellaneous Accessories

MaxQ 5000	Model No.
Stainless steel shelf for chamber L x W 33.25 x 4.0" (84.5 x 10.2 cm)	SHK5000-6
Gassing manifold with 8 outlets (customer installed)	SHK5000-8GM
Gassing manifold with 16 outlets (customer installed)	SHK5000-16GM

Note: Optional gassing manifold enables direct gassing into flasks for anaerobic cultures.



Easy-access drain system offers convenience in draining and disinfecting the system.



Retractable foot casters allow easy manipulation in lab.

MaxQ 6000 Incubated and Refrigerated Stackable Shakers

Save valuable lab space with stackable shakers

Combines orbital shaking with general purpose incubation for added versatility

- Units can be stacked two high on the floor to save valuable bench space
- Two adjustable-height shelves provide added storage
- Large viewing window and internal light offer sample visibility
- Door can be hinged from the right or left by the user for convenient placement in the lab
- In-chamber electrical outlet provides power for operating stirrers or rotators
- Spacious stainless steel chamber permits stacking an 18 x 18" platform to double the shaking capacity

Applications

- Bacterial suspensions
- Solubility studies
- Extraction procedures
- General mixing
- Staining and destaining
- Hybridizations
- Diagnostic test
- Washing procedures
- Protein expression
- Plasmid purification



Ordering Information

Select the right shaker for your needs and customize by selecting either a Universal Platform or a Dedicated Platform.

MaxQ 6000 Shaker

Shaker Options	Speed Range (rpm)	Orbit Diameter In. (cm)	Max. Load Lb. (kg)	Temperature Range and Accuracy	Temperature Uniformity	Overall Dimensions/ Chamber Dimensions Inches (cm)			Shipping Weight Lb. (kg)	Model. No. 120V	Model No. 240V
						L	W	H			
MaxQ 6000 – Large Stackable Incubated Floor Shaker											
Digital	15–500 ±1 (unstacked)	0.75 (1.9)	35 (15.9)	10°C above ambient to 80°C, ±0.1°C at 37°C in flask	±0.5°C at 37°C in flask	33 (83.8)	27 (69.9)	40.5 (102.9)	330 (150)	SHKE6000 (60 Hz)	SHKE6000-1CE (50/60 Hz)
	15–300 ±1 (stacked)					21 (53.3)	22 (55.9)	27 (68.6)			
MaxQ 6000 – Large Stackable Incubated and Refrigerated Floor Shaker											
Digital	15–500 ±1 (unstacked)	0.75 (1.9)	35 (15.9)	15°C below ambient to 80°C, ±0.1°C at 37°C in flask	±0.5°C at 37°C in flask	33 (83.8)	27 (69.9)	40.5 (102.9)	430 (195)	SHKE6000-7 (60 Hz)	SHKE6000-8CE (50 Hz)
	15–300 ±1 (stacked)					21 (53.3)	22 (55.9)	27 (68.6)			

Platforms

Maximize flexibility by choosing your platform and selecting a mixture of clamps.

MaxQ 6000				Model. No.
Platforms Choose the platform that best fits your needs.	Universal Platforms Maximum flexibility for using a mix of different size labware on a single platform. See Universal Clamp Guide for clamp capacities. Purchase clamps separately.	18 x 18" (45.7 x 45.7 cm)	Platform without Clamps	30110
		18 x 18" (45.7 x 45.7 cm)	Dual Stacked Platform without Clamps	30128
	Dedicated Platforms Clamps come installed to provide maximum capacity.	18 x 18" (45.7 x 45.7 cm)	Platform with Clamps	See Dedicated Platforms below
Clamps	Mix and match clamps for your Universal Platform.			See Universal Clamp Guide below

Universal Clamp Guide

Maximize flexibility by choosing your platform and selecting a mixture of clamps. Maximize capacity by choosing your platform with pre-installed clamps.

Clamp	Model No.	Clamp Capacity Guide Max. clamp capacity of vessels for the Universal Platform
MaxQ 6000		
18 x 18" (45.7 x 45.7 cm)		
Flask Clamp Starter Kit, includes (1) microplate clamp, (2) 125 ml flask clamps, (4) 250 ml flask clamps, (4) 500 ml flask clamps, (2) 1L flask clamps, (2) 2L flask clamps	30129	
Microplate/Deep-well plate	30175	10
10 ml Erlenmeyer Flask	30150BI	113
25 ml Erlenmeyer Flask	30151	64
50 ml Erlenmeyer Flask	30152BI	32
125 ml Erlenmeyer Flask	30153	32
250 ml Erlenmeyer Flask	30154BI	16
300 ml Erlenmeyer Flask	30155	16
500 ml Erlenmeyer Flask	30156BI	16
1L Erlenmeyer Flask	30157BI	9
2L Erlenmeyer Flask	30158	6
4L Erlenmeyer Flask	30159	4
6L Erlenmeyer Flask	30160	2
2500 ml Low Form Culture Flask	30161	1
2800 ml Fernbach Flask	30162	4
Adhesive Flask Mat, 9 x 9" (23 x 23 cm)	300349³	–
Test Tube Rack – Full Size		
10–13 mm, red, 6 x 12 array	30180BI	6
14–16 mm, orange, 6 x 12 array	30182¹	4
17–20 mm, white, 4 x 10 array	30184	5
21–25 mm, blue, 4 x 10 array	30186	3
26–30 mm, green, 3 x 8 array	30188²	4
Microcentrifuge, 1.5 ml, blue, 8 x 12 array	30190	5
Test Tube Racks – Half Size		
10–13 mm, red, 6 x 6 array	30181	12
14–16 mm, orange, 6 x 6 array	30183¹	6
17–20 mm, white, 4 x 5 array	30185	8
21–25 mm, blue, 4 x 4 array	30187	6
26–30 mm, green, 3 x 3 array	30189²	9
Microcentrifuge, 1.5 ml, blue, 4 x 6 array	30191	8

¹Fits 15 ml centrifuge tubes ²Fits 50 ml centrifuge tubes ³Can be cut to fit, reusable

Dedicated Platforms with Clamps

Maximize capacity by choosing your platform with pre-installed clamps.

Clamps come installed to provide maximum capacity			
Platform Size		Capacity	Model No.
18 x 18" (45.7 x 45.7 cm)	10 ml Erlenmeyer Flask	113	3524-1
	25 ml Erlenmeyer Flask	64	3524-2
	50 ml Erlenmeyer Flask	64	3524-3
	125 ml Erlenmeyer Flask	32	3524-4
	250 ml Erlenmeyer Flask	25	3524-5
	300 ml Erlenmeyer Flask	16	3524-6
	500 ml Erlenmeyer Flask	16	3524-7
	1L Erlenmeyer Flask	9	3524-8
	2L Erlenmeyer Flask	5	3524-9
	10 ml beaker	152	3524-35
	20 ml beaker	104	3524-36
	30 ml beaker	104	3524-37
	100 ml beaker	44	3524-38
	250 ml beaker	25	3524-39
	400 ml beaker	25	3524-40
	600 ml beaker	16	3524-41
	Utility Tray	–	3524-46

Optional Accessories

MaxQ 6000	Model No.
Stacking Kit for additional MaxQ 6000 shaker	SHK6000-10
Adapter set for stacking two platforms	3522-3
Seismic Restraint	SHK6000-20



MaxQ 8000 Incubated and Refrigerated Stackable Shakers

Maximizes flexibility and production capability in a convenient stackable design

- Units can be stacked two to three high for space savings with a speed range of 25 to 400 rpm ± 1 rpm
- HEPA filter evenly distributes air inside the chamber and reduces cross contamination improving culturing conditions; rated at 95% efficient at 0.3 microns for entrapment of airborne particles
- Ergonomically designed fold down door and a platform that slides out 100% with a maximum platform height of 61" (154.9 cm) when stacked three units high improves sample handling
- Stacking kit is FREE with every unit
- User interface displays both set and actual run conditions to simplify programming and prevent entry error
- Crevice-free stainless steel interior with coved corners and built-in drain keeps spills within work area and promotes easy cleaning
- All maintenance can be handled from the front of the unit without having to move or unstack the shakers
- Chamber is tall enough to accommodate 2L Erlenmeyer flasks
- Standard remote alarm contacts allow convenient monitoring of alarm conditions from another location

Applications

- Growth of bacteria or yeast
- Dissolution studies
- Staining and destaining of electrophoresis gels
- Extractions
- Protein expression
- Growth of insect cells
- Hybridizations
- Protein purification



Ordering Information

Select the right shaker for your needs and customize by selecting either a Universal Platform or a Dedicated Platform.

MaxQ 8000 Shaker

Shaker Options	Speed Range (rpm)	Orbit Diameter In. (cm)	Max. Load Lb. (kg)	Temperature Range and Accuracy	Temperature Uniformity	Overall Dimensions/ Chamber Dimensions Inches (cm)			Shipping Weight Lb. (kg)	Model No. 120V, 50/60 Hz	Model No. 240V, 50/60 Hz
						L	W	H			
MaxQ 8000 – Stackable Incubated Shaker											
Digital	25–400 ±1	1.0 (2.54)	35.5 (16.1)	10°C above ambient to 60°C ±0.15°C at 37°C in flask	±0.3°C at 37°C in flask	33.3 (84.6)/ 21 (53.3)	46.5 (118.1)/ 22 (55.9)	25 (63.5)/ 27 (68.6)	658 (298.5)	SHKE8000	SHKE8000-1CE
MaxQ 8000 – Stackable Incubated and Refrigerated Shaker											
Digital	25–400 ±1	1.0 (2.54)	35.5 (16.1)	20°C below ambient to 60°C +0.15°C at 37°C in flask	±0.3°C at 37°C in flask	33.3 (84.6)/ 21 (53.3)	56.5 (143.5)/ 22 (55.9)	25 (63.5)/ 27 (68.6)	723 (328)	SHKE8000-7	SHKE8000-8CE

Platforms

Maximize flexibility by choosing your platform and selecting a mixture of clamps.

MaxQ 8000					Model No.
Platforms	Universal Platforms		29.5 x 18" (74.9 x 45.7 cm)	Platform without Clamps	238061
	Dedicated Platforms		29.5 x 18" (74.9 x 45.7 cm)	Platform with Clamps	See Dedicated Platforms on p. 25
Clamps	Mix and match clamps for your Universal Platform.				See Universal Clamp Guide below



Universal Clamp Guide

Mix and match to customize the Universal Platform for your unique needs. Clamps sold as individual units.

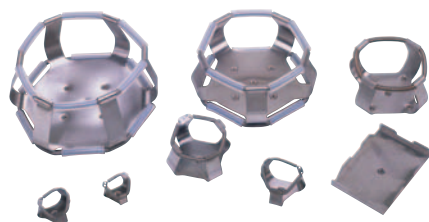
Clamp	Model No.	Clamp Capacity Guide Max. clamp capacity of vessels for the Universal Platform
Flask Clamp Starter Kit, includes (1) microplate clamp, (2) 25 ml flask clamps, (2) 50 ml flask clamps, (2) 125 ml flask clamps, (4) 250/300 ml flask clamps, (4) 500 ml flask clamps, (2) 1L flask clamps, (2) 2L flask clamps and replacement screws	236099	–
Microplate	236025	18
25 ml Erlenmeyer Flask	236010	91
50 ml Erlenmeyer Flask	236011	91
125 ml Erlenmeyer Flask	236012	39
250/300 ml Erlenmeyer Flask	236013	30
500 ml Erlenmeyer Flask	236014	24
1L Erlenmeyer Flask	236015	12
2L Erlenmeyer Flask	236016	11
2800 ml Fernback Flask	236019	6
Adhesive Flask Mat, 9 x 9" (23 x 23 cm)	300349 ³	–
Replacement Screws: (50) #10-24 x 5/16" countersink Phillips head screws for clamps and (6) 1/4-20 x 3/4" countersink flat head socket for platforms and (2) 1/4"-20 x 1-1/2" hex socket set screws	194046	
Universal Test Tube Rack with Holder (Must purchase desired test tube rack in addition to holder)		
Universal adjustable angle test tube rack holder	600088	–
Test tube rack, 72 places, 10–13 mm (3–7 ml) tubes	950040 ²	5 angled
Test tube rack, 40 places, 16–20 mm (10–20 ml) tubes	950060 ²	4 angled
Test tube rack, 40 places, 21–25 mm (30 ml) tubes	600074 ²	4 angled
Test tube rack, 24 places, 26–30 mm (50 ml) tubes	600075 ²	4 angled
Adjustable Test Tube Racks with Holder (Includes one test tube rack)		
Adjustable angle test tube rack holder with test tube rack, 72 places, 10–13 mm (3–7 ml) tubes	600076 ⁴	5 angled
Adjustable angle test tube rack holder with test tube rack, 40 places, 16–20 mm (10–20 ml) tubes	600077 ⁴	4 angled
Adjustable angle test tube rack holder with test tube rack, 40 places, 21–25 mm (30 ml) tubes	600078 ⁴	4 angled
Adjustable angle test tube rack holder with test tube rack, 24 places, 26–30 mm (50 ml) tubes	600079 ⁴	4 angled
Vial/Tube Inserts		
Pack of 5 vial/tube inserts, perforated for (3) 50 ml tubes, (3) 20 ml tubes, and (8) 1.5–2 ml vials (Requires 1L Erlenmeyer Flask Clamp 236015)	161033	3 x 50 ml tubes, 3 x 20 ml tubes and 8 x 1.5/2.0 ml vials
Microplate Rack Inserts		
Microplate rack insert for standard plates, 3 shelves (Requires Universal adjustable angle test tube rack holder)	600090	7 racks, 63 plates
Microplate rack insert for deep-well plates, 2 shelves (Requires Universal adjustable angle test tube rack holder)	600089 ¹	5 racks, 30 plates
Replacement Screws		
Replacement Screws (50) #10-24 x 5/16" countersink Phillips headscrews for mounting tube holders to platform	194024	–

¹Shaken at a 15 degree angle

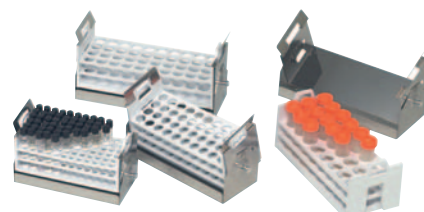
²Requires 11-676-039 or a dedicated adjustable angle test tube rack holder of the corresponding size

³Can be cut to fit, reusable

⁴Includes rack holder



The universal test tube rack holder can be adjusted to fit any of the four available test tube rack sizes. Universal design requires the separate purchase of a test tube rack.

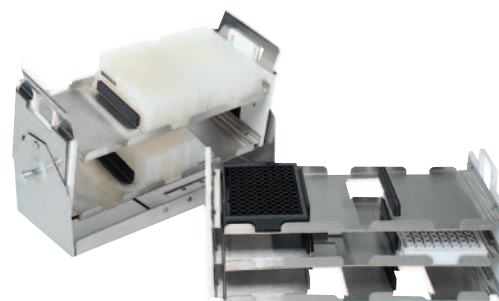


Adjustable test tube rack holders can be used only with their corresponding rack size. This design includes one test tube rack each.

Dedicated Platforms with Clamps

Maximize capacity by choosing your platform with pre-installed clamps.

Clamps come installed to provide maximum capacity			
Platform Size	Description	Capacity	Model No.
29.5 x 18" (74.9 x 45.7 cm)	25 ml Erlenmeyer Flask	91	238066
	50 ml Erlenmeyer Flask	91	238067
	125 ml Erlenmeyer Flask	61	238068
	250/300 ml Erlenmeyer Flask	30	238069
	250/300 ml Erlenmeyer Flask	40	238070
	500 ml Erlenmeyer Flask	24	238071
	1L Erlenmeyer Flask	15	238072
	2L Erlenmeyer Flask	12	238073
	2800 ml Fernbach Flask	6	238074



Microplate Rack Inserts

Our Microplate Rack Inserts are available for the Dedicated Adjustable Angle Test Tube Rack Holder (50 ml)-No. 600079 and the Universal Adjustable Angle Test Tube Rack Holder-No. 600088. You can increase your microplate shaking capacity, shake deepwell format plates at an angle, and remove many plates from the shaker at once for quick and easy transport to your benchtop.

Optional Accessories

MaxQ 8000		Model No.
Stand for one Stackable Shaker 45.5"W x 29.6"H x 35.3"D (115.6 x 75.2 x 89.7 cm); 30.6" (77.7 cm) max. height with leveling feet extended		194222
Stand for two Stackable Shakers 45.5"W x 11.8"H x 30.5"D (115.6 x 30.0 x 77.5 cm); 12.8" (32.5 cm) max. height with leveling feet extended		194223
Door Glass Cover Prevents light from entering through window		194224
7 Day Recorder 0–100°C, 6"	115V, 50/60 Hz	201126
	220V, 50/60 Hz	201127
Chart Paper, 50 sheet per box		197075
HEPA filter, replacement		760440
Sensaphone® Telephone Dialing System	Four Channel, 120V/60 Hz	400047
Alarm system that will notify user via the telephone	Eight Channel, 120V/60 Hz	400134



Stands for Stackable Shakers

The single and dual shaker stands place the stackable shakers at a convenient working height. No stand is required for units stacked three high.



Vial/Tube Inserts for 1 Liter flask Clamps

Flexible, reusable, closed-cell foam Vial/Tube Inserts are ideal for shaking a mix of tube and vial sizes in temperature ranges up to 70°C (158°F). The insert fits snugly into a 1 liter flask clamp, repels spills, and is easy to clean.

MaxQ 7000 Water Bath Shakers

Maintain outstanding temperature uniformity for water bath shaker applications

- Easy access drain with quick disconnect located in the front of the cabinet for convenience in draining and disinfecting
- Alarm alerts operator in case of low water level
- Prevent heat loss and minimize evaporation with use of optional covers
- Minimize splashing and turbulence with twin baffles
- Optional cooling coil available for near ambient temperatures and below

Applications

- Cell culture
- Solubility studies
- Extraction procedures
- Diagnostic tests
- General mixing
- Bacterial suspensions
- Staining and destaining
- Washing procedures
- Hybridization



MaxQ 7000 with stainless-steel gable cover
Model No. SHK7000-30 (See Optional Accessories, page 27)



MaxQ 7000 with Plexiglas® gable cover
Model No. SHK7000-32 (See Optional Accessories, page 27)

Ordering Information

Select the right shaker for your needs and customize by selecting either a Universal Platform or a Dedicated Platform.

MaxQ 7000 Shaker

Shaker Options	Speed Range (rpm)	Orbit Diameter In. (cm)	Max. Load Lb. (kg)	Temperature Range and Accuracy	Temperature Uniformity	Overall Dimensions/ Chamber Dimensions Inches (cm)			Chamber Capacity Gallons (L)	Shipping Weight Lb. (kg)	Model No. 120V, 50/60 Hz	Model No. 240V, 50/60 Hz
						L	W	H				
MaxQ 7000 – Water Bath Shaker												
Analog	40–400	0.50 (1.27)	35 (15.9)	5°C above ambient to 65°C ±0.2°C at 37°C in flask	±0.1°C at 37°C in flask	25 (63.5)/ 16 (41)	21.5 (54.6)/ 14 (36)	18 (45.7)/ 8 (20.3)	7.7 (29.4)	107 (48.5)	SHKA7000	SHKA7000-1CE
Digital	15–500 ±1	0.50 (1.27)	35 (15.9)	5°C above ambient to 65°C ±0.2°C at 37°C in flask	±0.1°C at 37°C in flask	25 (63.5)/ 16 (41)	21.5 (54.6)/ 14 (36)	18 (45.7)/ 8 (20.3)	7.7 (29.4)	107 (48.5)	SHKE7000	SHKE7000-1CE

Platforms

Maximize flexibility by choosing your platform and selecting a mixture of clamps.

MaxQ 7000				Model No.
Platforms Choose the platform that best fits your needs.	Universal Platforms Maximum flexibility for using a mix of different size labware on a single platform. See Universal Clamp Guide for clamp capacities. Purchase clamps separately.	11 x 13" (28 x 33 cm)	Platform without Clamps	30105
	Dedicated Platforms Clamps come installed to provide maximum capacity.	11 x 13" (28 x 33 cm)	Platform with Clamps	See Dedicated Platforms below
Clamps	Mix and match clamps for your Universal Platform.			See Universal Clamp Guide below

Universal Clamp Guide

Mix and match to customize the Universal Platform for your unique needs. Clamps sold as individual units.

Clamp	Model No.	Clamp Capacity Guide Max. clamp capacity of vessels for the Universal platform	
		MaxQ 7000 11 x 13" (28 x 33 cm)	
Flask Clamp Starter Kit, includes (1) microplate clamp, (2) 125 ml flask clamps, (4) 250 ml flask clamps, (4) 500 ml flask clamps, (2) 1L flask clamps, (2) 2L flask clamps	30129		
Microplate/Deep-well plate	30175		5
10 ml Erlenmeyer Flask	30150BI		60
25 ml Erlenmeyer Flask	30151		60
50 ml Erlenmeyer Flask	30152BI		30
125 ml Erlenmeyer Flask	30153		13
250 ml Erlenmeyer Flask	30154BI		9
300 ml Erlenmeyer Flask	30155		7
500 ml Erlenmeyer Flask	30156BI		6
1L Erlenmeyer Flask	30157BI		4
2L Erlenmeyer Flask	30158		1
4L Erlenmeyer Flask	30159		1
6L Erlenmeyer Flask	30160		1
2500 ml Low Form Culture Flask	30161		1
2800 ml Fernbach Flask	30162		1
Test Tube Racks – Full Size			
10–13 mm, red, 6 x 12 array	30180BI		3
14–16 mm, orange, 6 x 12 array	30182 ¹		2
17–20 mm, white, 4 x 10 array	30184		3
21–25 mm, blue, 4 x 10 array	30186		2
26–30 mm, green, 3 x 8 array	30188 ²		2
Microcentrifuge, 1.5 ml, blue, 8 x 12 array	30190		2
Test Tube Racks – Half Size			
10–13 mm, red, 6 x 6 array	30181		6
14–16 mm, orange, 6 x 6 array	30183 ¹		4
17–20 mm, white, 4 x 5 array	30185		4
21–25 mm, blue, 4 x 4 array	30187		4
26–30 mm, green, 3 x 3 array	30189 ²		6
Microcentrifuge, 1.5 ml, blue, 4 x 6 array	30191		4

¹Fits 15 ml centrifuge tubes ²Fits 50 ml centrifuge tubes



Dedicated Platforms with Clamps

Maximize capacity by choosing your platform with pre-installed clamps.

Clamps come installed to provide maximum capacity			
Platform Size		Capacity	Model No.
11 x 13" (28 x 33 cm)	10 ml Erlenmeyer Flask	63	3540-1
	25 ml Erlenmeyer Flask	32	3540-2
	50 ml Erlenmeyer Flask	32	3540-3
	125 ml Erlenmeyer Flask	16	3540-4
	250 ml Erlenmeyer Flask	9	3540-5
	300 ml Erlenmeyer Flask	8	3540-6
	500 ml Erlenmeyer Flask	6	3540-7
	1L Erlenmeyer Flask	4	3540-8
	2L Erlenmeyer Flask	2	3540-9
	10 ml Beaker	76	3540-35
	20 ml Beaker	52	3540-36
	30 ml Beaker	52	3540-37
	100 ml Beaker	22	3540-38
	Utility Tray	–	3540-46
	Basket Platform with Retainer Springs	–	3540-49

Optional Accessories

MaxQ 7000	Model No.
Cooling Coil, customer installed Needed for near-ambient temperature and below	SHK7000-37 ³
Gable cover, Stainless-steel For temperatures up to 90°C	SHK7000-30
Gable cover, Plexiglas® For temperatures up to 65°C	SHK7000-32
Auxiliary Platform Suspension Arms Used for rapid platform changes	SHK7000-40
Movable Dolly For under lab bench operation	SHK7000-45
Mobile Cart	SHK7000-48

³This accessory requires a circulating chiller

Introducing the

Thermo Scientific MaxQ High Performance Shakers

Optimized growth with
proven technologies



Your cultures need to be protected.

That's why our MaxQ High Performance shakers feature set point security which restricts unauthorized or inadvertent changes to key functions. To ensure the safety of your samples, our shakers are equipped with alarm contacts allowing them to be connected to remote alarms making you aware of how the shaker is performing at all times, safeguarding both the shaker and contents.

Your cultures require optimum growth.

Outstanding temperature uniformity of $\pm 0.3^{\circ}\text{C}$ is provided by a directed laminar airflow and HEPA filtration system even when the units are fully loaded with samples. Low end temperature of 4°C is achieved efficiently and effectively by the filtered front to back refrigeration system airflow. This design outperforms side-to-back and back-to-back airflow designs even in high ambients.

Your sample monitoring just got easier!

Our MaxQ High Performance shakers feature a backlit display that can be viewed in bright or dimly lit conditions. It contains both run points and set points of temperature, speed and time which can be viewed simultaneously, preventing toggling from one display to another.



MaxQ High Performance 416 and 430 Open Air Platform Shakers

Choice of two platform sizes maximizes capacity

- Low heat 24V DC motor with moisture resistant electronics provides continuous maintenance-free operation on the benchtop or in a chamber
- Triple counter-balanced mechanism for optimum handling of full or unbalanced loads regardless of vessel placement and completely eliminates walking
- Units operate in temperature range of 4°C to +40°C and humidity conditions from 50 to 80% non-condensing enabling them to be used in a variety of environments
- Oversized, adjustable suction cup feet minimize vibration

Applications

- Cell culture
- Solubility studies
- Extraction procedures
- Diagnostic tests
- General mixing
- Bacterial suspensions
- Staining
- Destaining
- Washing procedures
- Hybridizations



Ordering Information

Select the right shaker for your needs and customize by selecting either a Universal Platform or a Dedicated Platform.

MaxQ High Performance 416 and 430 Shakers

Shaker Options	Speed Range (rpm)	Orbit Diameter In. (cm)	Max Load Lb. (kg)	Overall Dimensions Inches (cm)			Shipping Weight Lb. (kg)	Model No. 115V/230V, 50/60Hz (Dual Voltage)
				L	W	H		
MaxQ 416 HP - Mid-Size Open Air Shaker								
Digital	25-525 ±1	1.0 (2.5)	71 (32)	26 (66)	24.3 (61.7)	7.8 (19.8)	234 (106)	SHKE416HP
MaxQ 430 HP - Large Open Air Shaker								
Digital	25-525 ±1	1.0 (2.5)	71 (32)	26 (66)	30.5 (77.5)	7.8 (19.8)	234 (106)	SHKE430HP

Platforms

Maximize flexibility by choosing your platform and selecting a mixture of clamps.

MaxQ 416 HP				Model No.
Platforms	Universal Platforms Maximum flexibility for using a mix of different size labware on a single platform. See Universal Clamp Guide for clamp capacities. Purchase clamps separately. Dedicated Platforms Clamps come installed to provide maximum capacity.	18" x 18" (45.7 x 45.7 cm)	Platform without Clamps	238000
Choose the platform that best fits your needs.		24" x 18" (60.9 x 45.7 cm)	Platform without Clamps	238008
		18" x 18" (45.7 x 45.7 cm)	Platform with Clamps	See Dedicated Platforms below
		24" x 18" (60.9 x 45.7 cm)	Platform with Clamps	See Dedicated Platforms below
Clamps	Mix and match clamps for your Universal Platform			See Universal Clamp Guide below
MaxQ 430 HP				Model No.
Platforms	Universal Platforms Maximum flexibility for using a mix of different size labware on a single platform. See Universal Clamp Guide for clamp capacities. Purchase clamps separately. Dedicated Platforms Clamps come installed to provide maximum capacity.	29.5" x 18" (74.9 x 45.7 cm)	Platform without Clamps	238001
Choose the platform that best fits your needs.		36" x 24" (91.4 x 60.9 cm)	Platform without Clamps	238002
		29.5" x 18" (74.9 x 45.7 cm)	Platform with Clamps	See Dedicated Platforms below
		36" x 24" (91.4 x 60.9 cm)	Platform with Clamps	See Dedicated Platforms below
Clamps	Mix and match clamps for your Universal Platform			See Universal Clamp Guide below

Universal Clamp Guide

Mix and match to customize the Universal Platform for your unique needs. Clamps sold as individual units.

Clamp	Model No.	Clamp Capacity Guide Maximum clamp capacity of vessels for the Universal Platform.			
		MaxQ 416 HP		MaxQ 430 HP	
		18" x 18" (45.7 x 45.7 cm)	24" x 18" (60.9 x 45.7 cm)	29.5" x 18" (74.9 x 45.7 cm)	36" x 24" (91.4 x 60.9 cm)
Flask Clamp Starter Kit includes: (2) 25 ml flask clamps, (2) 50 ml flask clamps, (2) 125 ml flask clamps, (4) 250 ml flask clamps, (4) 500 ml flask clamps, (2) 1L flask clamps, and (2) 2L flask clamps	236099				
Microplate / Deepwell Plate	236025	10	16	18	31
25 ml Erlenmeyer Flask	236010	49	80	91	150
50 ml Erlenmeyer Flask	236011	49	80	91	150
125 ml Erlenmeyer Flask	236012	25	40	39	75
250/300 ml Erlenmeyer Flask	236013	18	25	30	55
500 ml Erlenmeyer Flask	236014	16	20	24	30
1L Erlenmeyer Flask	236015	8	12	12	24
2L Erlenmeyer Flask	236016	6	8	11	15
4L Erlenmeyer Flask	236017	4	5	6	11
5L Erlenmeyer Flask	236028	4	4	6	8
6L Erlenmeyer Flask	236018	2	4	4	8
2800 ml Fernbach Flask	236019	4	5	6	11
Adhesive Flask Mat	300349	—	—	—	—
Adjustable Test Tube Racks with Holder (Includes one test tube rack)					
10–13 mm - 3–7 ml tube rack - 72 place	600076	4	6	8	16
16–20 mm - 10–20 ml tube rack - 40 place	600077	4	6	7	16
21–25 mm - 30 ml tube rack - 40 place	600078	3	5	6	9
26–30 mm - 50 ml tube rack - 24 place	600079	3	5	6	9
Universal Test Tube Rack with Holder (Must purchase desired test tube rack in addition to holder)					
Universal adjustable angle test tube rack holder	600088	—	—	—	—
10–13 mm - 3–7 ml tube rack - 72 place	950040	3	4	5	9
16–20 mm - 10–20 ml tube rack - 40 place	950060	3	4	5	9
21–25 mm - 30 ml tube rack - 40 place	600074	2	3	4	7
26–30 mm - 50 ml tube rack - 24 place	600075	2	3	4	7
Microplate Racks and Vial/Tube Inserts					
Microplate Rack for Standard Plates	600090 ¹	4 racks, 36 plates	5 racks, 45 plates	7 racks, 63 plates	8 racks, 72 plates
Microplate Rack for Deepwell Plates	600089 ²	3 racks, 18 plates	4 racks, 24 plates	5 racks, 30 plates	7 racks, 42 plates
Pack of 5 vial/tube inserts for use in 1L flask clamps	161033 [*]	8	12	12	24
Universal Utility Trays					
9" x 18" (22.9 x 45.7 cm) Utility Tray with 0.5" (1.3 cm) rubber pad	236026	1	2	3	3
18" x 18" (45.7 x 45.7 cm) Utility Tray with 0.5" (1.3 cm) rubber pad	236027	1	1	1	2

^{*}Holds 3 x 50 ml tubes, 3 x 20 ml tubes, and 8 x 1.5/2.0 ml vials ¹3 shelves ²2 shelves

Miscellaneous Accessories

MaxQ HP 416, 430	Model No.
9.0" x 18.0" (22.9 x 45.7 cm) Utility tray with 0.5" (1.3 cm) thick rubber pad	236026
18.0" x 18.0" (45.7 x 45.7 cm) Utility tray with 0.5" (1.3 cm) thick rubber pad	236027
Quick change platform adapter	194040
MagNote wipe-off magnet and pen kit (benchtop models only)	194140
Four channel Sensaphone telephone dialing system	400047
Eight channel Sensaphone telephone dialing system	400134
Replacement screws: (50) #10-24 x 3/8" pan head Phillips screws for mounting test tube holders to platform	194024
Replacement screws: (50) #10-24 x 5/16" Countersink Phillips Head Screws for Clamps and (12) 1/4-20 x 3/4" Countersink Flat Head Socket Screws for Platforms	194046

Dedicated Platforms with Clamps

Maximize capacity by choosing your platform with pre-installed clamps.

Clamps come installed to provide maximum capacity			
Platform Size	Description	Capacity	Model No.
MaxQ 416 HP			
18" x 18" (45.7 x 45.7 cm)	25 ml Erlenmeyer Flask	49	238010
	50 ml Erlenmeyer Flask	49	238011
	125 ml Erlenmeyer Flask	25	238012
	125 ml Erlenmeyer Flask*	36	238049
	250/300 ml Erlenmeyer Flask	18	238013
	250/300 ml Erlenmeyer Flask*	25	238050
	500ml Erlenmeyer Flask	16	238014
	1L Erlenmeyer Flask	8	238015
	2L Erlenmeyer Flask	6	238016
	4L Erlenmeyer Flask	4	238046
	5L Erlenmeyer Flask	4	238053
	6L Erlenmeyer Flask	2	238047
	2800ml Fernbach Flask	4	238048
24" x 18" (60.9 x 45.7 cm)	25 ml Erlenmeyer Flask	80	238036
	50 ml Erlenmeyer Flask	80	238037
	125 ml Erlenmeyer Flask	40	238038
	250/300 ml Erlenmeyer Flask	25	238052
	250/300 ml Erlenmeyer Flask*	35	238039
	500 ml Erlenmeyer Flask	20	238040
	1L Erlenmeyer Flask	12	238041
	2L Erlenmeyer Flask	8	238042
	4L Erlenmeyer Flask	5	238043
	5L Erlenmeyer Flask	4	238055
	6L Erlenmeyer Flask	4	238044
	2800 ml Fernbach Flask	5	238045
	MaxQ 430 HP		
29.5" x 18" (74.9 x 45.7 cm)	25 ml Erlenmeyer Flask	91	238017
	50 ml Erlenmeyer Flask	91	238018
	125 ml Erlenmeyer Flask	61	238019
	250/300 ml Erlenmeyer Flask	30	238051
	250/300 ml Erlenmeyer Flask*	40	238020
	500 ml Erlenmeyer Flask	24	238021
	1L Erlenmeyer Flask	15	238022
	2L Erlenmeyer Flask	12	238023
	4L Erlenmeyer Flask	6	238024
	5L Erlenmeyer Flask	6	238054
	6L Erlenmeyer Flask	4	238025
	2800 ml Fernbach Flask	6	238026
	36" x 24" (91.4 x 60.9 cm)	25 ml Erlenmeyer Flask	150
50 ml Erlenmeyer Flask		150	238058
125 ml Erlenmeyer Flask		96	238027
250/300 ml Erlenmeyer Flask*		70	238028
500 ml Erlenmeyer Flask		30	238029
1L Erlenmeyer Flask		24	238030
2L Erlenmeyer Flask		15	238031
4L Erlenmeyer Flask		11	238032
5L Erlenmeyer Flask		8	238056
6L Erlenmeyer Flask		8	238033
2800 ml Fernbach Flask	11	238034	

^{*}Increased capacity design does not allow the use of flasks larger than 500 ml.

MaxQ High Performance 420 Large Benchtop Incubated Shakers

Outstanding temperature uniformity improves product yields

Double-wall, insulated chamber contributes to optimum growth

- Twin blowers and gasketed lid ensure temperature uniformity of $\pm 0.3^{\circ}\text{C}$ (in flask) creating an ideal environment for temperature sensitive cultures
- Triple counter-balanced mechanism
- Microprocessor functions are calibrated through keypad
- Platform easily accommodates 6 x 2L flasks
- Clear acrylic lid withstands years of use without cracking or discoloration
- Audible/visual over and under-temperature alarms ensure sample protection
- Innovative design ensures system protection in case of spills

Applications

- Cell culture
- DNA fingerprinting
- Solubility studies
- Extraction procedures
- Protein expressions
- Bacterial suspensions
- Washing procedures
- Staining and destaining



Ordering Information

Select the right shaker for your needs and customize by selecting either a **Universal Platform** or a **Dedicated Platform**.

MaxQ High Performance 420 Shakers

Shaker Options	Speed Range (rpm)	Orbit Diameter In. (cm)	Max Load Lb. (kg)	Temperature Range and Accuracy	Temperature Uniformity	Overall Dimensions/Chamber Dimensions In (cm)			Shipping Weight Lb. (kg)	Model No. 115V/230V, 50/60Hz (Dual Voltage)
						L	W	H		
MaxQ 420 HP - Incubated Benchtop Shaker										
Digital	25–525 ±1	1.0 (2.5)	71 (32)	5°C above ambient to 80°C, ±0.1°C	±0.3°C at 37°C in flask	29 (73.7)/ 21.2 (53.8)	24.3 (61.7)/ 21.4 (54.4)	20.9 (53.1)/ 12.6 (32)	250 (113.4)	SHKE420HP

Platforms

Maximize flexibility by choosing your platform and selecting a mixture of clamps.

MaxQ 420 HP						Model No.
Platforms Choose the platform that best fits your needs.	Universal Platforms Maximum flexibility for using a mix of different size labware on a single platform. See Universal Clamp Guide for clamp capacities. Purchase clamps separately.			18" x 18" (45.7 x 45.7 cm)	Platform without Clamps	238000
	Dedicated Platforms Clamps come installed to provide maximum capacity.			18" x 18" (45.7 x 45.7 cm)	Platform with Clamps	See Dedicated Platforms below
Clamps	Mix and match clamps for your Universal Platform					See Universal Clamp Guide below

Universal Clamp Guide

Max and match to customize the Universal Platform for your unique needs.
Clamps sold as individual units.

Clamp	Model No.	Clamp Capacity Guide Maximum clamp capacity of vessels for the Universal Platform.
MaxQ 420 HP		
18" x 18" (45.7 x 45.7 cm)		
Flask Clamp Starter Kit includes: (2) 25 ml flask clamps, (2) 50 ml flask clamps, (2) 125 ml flask clamps, (4) 250 ml flask clamps, (4) 500 ml flask clamps, (2) 1L flask clamps, and (2) 2L flask clamps	236099	
Microplate / Deepwell Plate	236025	10
25 ml Erlenmeyer Flask	236010	49
50 ml Erlenmeyer Flask	236011	49
125 ml Erlenmeyer Flask	236012	25
250/300 ml Erlenmeyer Flask	236013	18
500 ml Erlenmeyer Flask	236014	16
1L Erlenmeyer Flask	236015	8
2L Erlenmeyer Flask	236016	6
2800 ml Fernbach Flask	236019	4
Adhesive Flask Mat	300349	—
Adjustable Test Tube Racks with Holder (Includes one test tube rack)		
10–13 mm - 3–7 ml tube rack - 72 place	600076	4
16–20 mm - 10–20 ml tube rack - 40 place	600077	4
21–25 mm - 30 ml tube rack - 40 place	600078	3
26–30 mm - 50 ml tube rack - 24 place	600079	3
Universal Test Tube Racks with Holder (Must purchase desired test tube rack in addition to holder)		
Universal Adjustable Tube Rack Holder	600088	—
10–13 mm - 3–7 ml tube rack - 72 place	950040	3
16–20 mm - 10–20 ml tube rack - 40 place	950060	3
21–25 mm - 30 ml tube rack - 40 place	600074	2
26–30 mm - 50 ml tube rack - 24 place	600075	2
Microplate Racks and Vial/Tube Inserts		
Microplate Rack for Standard Plates (3 shelves)	600090	4 racks, 36 plates
Microplate Rack for Deepwell Plates (2 shelves)	600089	3 racks, 18 plates
Pack of 5 vial/tube inserts for use in 1L flask clamps	161033*	8
Universal Utility Trays		
9" x 18" (22.9 x 45.7 cm) Utility Tray with 0.5" (1.3 cm) rubber pad	236026	1
18" x 18" (45.7 x 45.7 cm) Utility Tray with 0.5" (1.3 cm) rubber pad	236027	1

*Holds 3 x 50 ml tubes, 3 x 20 ml tubes and 8 x 1.5/2.0 ml vials

Miscellaneous Accessories

MaxQ HP 420	Model No.
Dual-stack benchtop shaker kit, includes kneewell side mount and orbital shaker stand	452000
Kneewell slide mount, shaker slides out on rails for easy access: 26.6" W x 22.2" H x 33" D (67.6 cm x 56.4 cm x 83.8 cm)	452002
Orbital shaker stand, uses 33.5" W x 37.3" H x 35.3" D of floor space (85.1 cm x 94.7 cm x 89.7 cm)	452001
Four drawer assembly, dimensions: 9.0" W x 18.0" H x 21.5" D (22.9 cm x 45.7 cm x 54.6 cm)	191494
Roller base for drawer assembly, adds 3" (7.6cm) to height: 9.4" W x 3.6" H x 21.9" D (23.9 cm x 9.1 cm x 55.6 cm)	191591
Gassing manifold (one gas)	194045
Free-standing 0–100°C, 6", seven day chart recorder, 115V, 60 Hz	201126
Free-standing 0–100°C, 6", seven day chart recorder, 220V, 50 Hz	201127
Replacement chart paper, 50 per box	197075
9.0" x 18.0" (22.9 x 45.7 cm) Utility tray with 0.5" (1.3 cm) thick rubber pad	236026
18.0" x 18.0" (45.7 x 45.7 cm) Utility tray with 0.5" (1.3 cm) thick rubber pad	236027
Quick change platform adapter	194040
MagNote wipe-off magnet and pen kit (benchtop models only)	194140
Four channel Sensaphone telephone dialing system	400047
Eight channel Sensaphone telephone dialing system	400134
Replacement screws: (50) #10-24 x 3/8" pan head Phillips screws for mounting test tube holders to platform	194024
Replacement screws: (50) #10-24 x 5/16" Countersink Phillips Head Screws for Clamps and (12) 1/4-20 x 3/4" Countersink Flat Head Socket Screws for Platforms	194046

MaxQ High Performance Incubated and Refrigerated Floor Shakers Models 435 (436) and 480R (481R)

Solutions for high capacity requirements

- HEPA filtration for maximum protection from contamination
- Drain system with valve makes it easy to eliminate liquid, reducing the risk of water borne contamination
- Directed laminar airflow system for optimum temperature uniformity
- Crevice-free, stainless steel interior with coved corners for easy cleaning
- Viewing window offers sample visibility
- Access port in rear of cabinet allows insertion of probes, CO₂ gassing manifolds or other equipment
- Foot pedal opens lid for hands free operation
- Floor models meet specified performance of 4°C to 60°C even in high ambient temperatures
- Low end temperature is achieved by the filtered front to back refrigeration air flow system

Applications

- Cell culture
- Extractions
- Plasmid purifications
- Solubility studies
- Hybridizations
- Staining and destaining



Ordering Information

Select the right shaker for your needs and customize by selecting either a **Universal Platform** or a **Dedicated Platform**.

MaxQ High Performance 435 (436) and 480R (481R) Shakers

Shaker Options	Speed Range (rpm)	Orbit Diameter In. (cm)	Max Load Lb. (kg)	Temperature Range and Accuracy	Temperature Uniformity	Overall Dimensions/Chamber Dimensions In (cm)			Shipping Weight Lb. (kg)	Model No. 120V, 60Hz	Model No. 230V, 50/60Hz
						L	W	H			
MaxQ 435 / 436 HP - Large Incubated Floor Shaker											
Digital	25–525 ±1	1.0 (2.5)	71 (32)	5°C above ambient to 60°C, ±0.1°C	±0.2°C at 37°C in flask	30 (76.2)/ 21.1 (53.6)	45 (114.3)/ 34.3 (87.1)	40.4 (102.6)/ 18.5 (47)	610 (277)	SHKE435HP	SHKE436HP
MaxQ 480R / 481R HP - Large Incubated and Refrigerated Floor Shaker											
Digital	25–525 ±1	1.0 (2.5)	71 (32)	4°C to 60°C, ±0.1°C	±0.2°C at 37°C in flask	30 (76.2)/ 21.1 (53.6)	45 (114.3)/ 34.3 (87.1)	40.4 (102.6)/ 18.5 (47)	665 (302)	SHKE480HP	SHKE481HP

Platforms

Maximize flexibility by choosing your platform and selecting a mixture of clamps.

MaxQ 435 / 436 / 480R / 481R HP				Model No.
Platforms Choose the platform that best fits your needs.	Universal Platforms Maximum flexibility for using a mix of different size labware on a single platform. See Universal Clamp Guide for clamp capacities. Purchase clamps separately.			29.5" x 18" (74.9 x 45.7 cm) Platform without Clamps
	Dedicated Platforms Clamps come installed to provide maximum capacity.			29.5" x 18" (74.9 x 45.7 cm) Platform with Clamps
Clamps	Mix and match clamps for your Universal Platform			See Universal Clamp Guide below

Universal Clamp Guide

Max and match to customize the Universal Platform for your unique needs. Clamps sold as individual units.

Clamp	Model No.	Clamp Capacity Guide Maximum clamp capacity of vessels for the Universal Platform.
MaxQ 435 / 436 / 480R / 481R HP 29.5" x 18" (74.9 x 45.7 cm)		
Flask Clamp Starter Kit includes: (2) 25 ml flask clamps, (2) 50 ml flask clamps, (2) 125 ml flask clamps, (4) 250 ml flask clamps, (4) 500 ml flask clamps, (2) 1L flask clamps, and (2) 2L flask clamps	236099	
Microplate / Deepwell Plate	236025	18
25 ml Erlenmeyer Flask	236010	91
50 ml Erlenmeyer Flask	236011	91
125 ml Erlenmeyer Flask	236012	39
250/300 ml Erlenmeyer Flask	236013	30
500 ml Erlenmeyer Flask	236014	24
1L Erlenmeyer Flask	236015	12
2L Erlenmeyer Flask	236016	11
4L Erlenmeyer Flask	236017	6
5L Erlenmeyer Flask	236028	6
6L Erlenmeyer Flask	236018	4
2800 ml Fernbach Flask	236019	6
Adhesive Flask Mat	300349	—
Adjustable Test Tube Racks with Holder (Includes one test tube rack)		
10–13 mm - 3–7 ml tube rack - 72 place	600076	4
16–20 mm - 10–20 ml tube rack - 40 place	600077	4
21–25 mm - 30 ml tube rack - 40 place	600078	3
26–30 mm - 50 ml tube rack - 24 place	600079	3
Universal Test Tube Racks with Holder (Must purchase desired test tube rack in addition to holder)		
Universal Adjustable Tube Rack Holder	600088	—
10–13 mm - 3–7 ml tube rack - 72 place	950040	3
16–20 mm - 10–20 ml tube rack - 40 place	950060	3
21–25 mm - 30 ml tube rack - 40 place	600074	2
26–30 mm - 50 ml tube rack - 24 place	600075	2
Microplate Racks and Vial/Tube Inserts		
Microplate Rack for Standard Plates (3 shelves)	600090	7 racks, 63 plates
Microplate Rack for Deepwell Plates (2 shelves)	600089	5 racks, 30 plates
Pack of 5 vial/tube inserts for use in 1L flask clamps	161033*	12
Universal Utility Trays		
9" x 18" (22.9 x 45.7 cm) Utility Tray with 0.5" (1.3 cm) rubber pad	236026	1
18" x 18" (45.7 x 45.7 cm) Utility Tray with 0.5" (1.3 cm) rubber pad	236027	1

*Holds 3 x 5.0 ml tubes, 3 x 20 ml tubes and 8 x 1.5/2.0 ml vials

Miscellaneous Accessories

MaxQ HP 435, 436, 480, 481	Model No.
Removable shelf	194033
Gassing manifold (one gas)	194045
0°C to 60°C, seven day chart recorder, 115V, 50/60 Hz	201113
Replacement chart paper, 50 per box	180006
HEPA filter replacement	760164
9.0" x 18.0" (22.9 x 45.7 cm) Utility tray with 0.5" (1.3 cm) thick rubber pad	236026
18.0" x 18.0" (45.7 x 45.7 cm) Utility tray with 0.5" (1.3 cm) thick rubber pad	236027
Platform adapter for NBS 30" x 18.0" (76.2cm x 45.7cm) platform	194041
Quick change platform adapter	194040
MagNote wipe-off magnet and pen kit (floor models only)	194139
Four channel Sensaphone telephone dialing system	400047
Eight channel Sensaphone telephone dialing system	400134
Replacement screws: (50) #10-24 x 3/8" pan head Phillips screws for mounting test tube holders to platform	194024
Replacement screws: (50) #10-24 x 5/16" Countersink Phillips Head Screws for Clamps and (12) 1/4-20 x 3/4" Countersink Flat Head Socket Screws for Platforms	194046

Dedicated Platforms with Clamps

Maximize capacity by choosing your platform with pre-installed clamps.

Clamps come installed to provide maximum capacity			
Platform Size	Description	Capacity	Model No.
29.5" x 18" (74.9 x 45.7 cm)	25 ml Erlenmeyer Flask	91	238017
	50 ml Erlenmeyer Flask	91	238018
	125 ml Erlenmeyer Flask	61	238019
	250/300 ml Erlenmeyer Flask	30	238051
	250/300 ml Erlenmeyer Flask	40	238020
	500 ml Erlenmeyer Flask	24	238021
	1L Erlenmeyer Flask	15	238022
	2L Erlenmeyer Flask	12	238023
	4L Erlenmeyer Flask	6	238024
	5L Erlenmeyer Flask	6	238054
2800 ml Fernbach Flask	6L Erlenmeyer Flask	4	238025
	2800 ml Fernbach Flask	6	238026

Learn more about our shakers!



Visit our new Shaker Resources Center at www.thermoscientific.com/shakervideos to see our product videos and read our application notes, SmartNotes, white papers and other valuable resources!

Enhance your shakers with Thermo Scientific Labware

In your lab, quality means reproducibility, so trust your cultures only to the most dependable materials.

Complement your Thermo Scientific MaxQ shakers with Thermo Scientific Nalgene Sterile Single-Use Erlenmeyer Flasks

Nalgene® PETG Flasks are ideal for suspension cell culture, media preparation, mixing and storage.

Our sterile, single-use flasks are made of light, break resistant, crystal clear PETG and come with either a solid cap or vented cap for sterile gas exchange. All sizes are available with plain bottom or with baffled bottom for use on the bench top or shaker table.

- Sterile and single use: Reduce contamination risk
- Robust and break resistant: Increase personal safety
- Collapses when autoclaved: Reduce biohazardous waste
- Graduated for quick volume assessment
- Excellent validation support: Validation binder available upon request†

www.thermoscientific.com/shakerflasks



† Validation binders are available to customers as support documentation during your product validation process. This confidential information can be requested at: roregsupport@thermofisher.com. Following your request submission, a Confidentiality Agreement will be forwarded to you for completion.





Trust our shakers for a range of applications:

Bacterial suspensions
Cell culture
Diagnostic test
Dissolution studies
DNA fingerprinting
Extraction procedures
General mixing
Growth of bacteria or yeast

Growth of insect cells
Hybridization
Mixing blood samples
Plasmid purification
Protein expression
Solubility studies
Staining and destaining
Washing procedures

www.thermoscientific.com/shakers

© 2012 Thermo Fisher Scientific Inc. All rights reserved. Sensaphone® is a registered trademark of PHONETICS, INC. Plexiglas® is a registered trademark of Altuglas International, ARKEMA Group in North American and Evonik Industries in Europe. All other trademarks are the property of Thermo Fisher Scientific Inc. and its subsidiaries. Specifications, terms and pricing are subject to change. Not all products are available in all countries. Please consult your local sales representative for details.

North America: USA/Canada +1 866 984 3766 (866-9-THERMO)

www.thermoscientific.com

Europe: Austria +43 1 801 40 0, Belgium +32 53 73 42 41, France +33 2 2803 2180, Germany national toll free 08001-536 376, Germany international +49 6184 90 6000, Italy +39 02 95059 448, Netherlands +31 76 579 55 55, Nordic/Baltic/CIS countries +358 9 329 10200, Russia +7 812 703 42 15, Spain/Portugal +34 93 223 09 18, Switzerland +41 44 454 12 12, UK/Ireland +44 870 609 9203

Asia: Australia +61 39757 4300, China +86 21 6865 4588 or +86 10 8419 3588, India toll free 1800 22 8374, India +91 22 6716 2200, Japan +81 45 453 9220, New Zealand +64 9 980 6700, Other Asian countries +852 2885 4613 **Countries not listed:** +49 6184 90 6940

Thermo
SCIENTIFIC

Part of Thermo Fisher Scientific